



**MONITOR TOOLS TODAY.
CONTROL, PREDICT AND
OPTIMIZE TOMORROW.**

ProFile®

MOULD CONCEPTS

DAHANAN

Tel: +31 (315) 23 11 14
www.dahanan.eu

**PROGRESSIVE
COMPONENTS**

ProFile Asset Management System

Start Anywhere, Scale Everywhere

ProFile's modular approach enables action today with the flexibility to expand tomorrow. Choose the level of asset management that fits current needs—whether basic asset management or cutting-edge real-time monitoring; the power lies in the options available.

Transform Asset Management Now

Begin with a small implementation or opt for a comprehensive solution—ProFile is designed to adapt to specific needs, timelines, and budgets. Join the ranks of manufacturers worldwide that rely on Progressive's 35-year legacy of innovation.

Achieve Operational Excellence

Take control of the transformation journey with ProFile's flexible architecture. Whether requiring basic asset tracking today or sophisticated real-time monitoring tomorrow, every component integrates seamlessly to drive success.



ProFile Benefits

Unified Data: All asset data is in one secure, cloud-based system.

Flexible Growth: Add products as needs evolve—no system overhaul required.

Role-Based: Customizable views allow visibility to what's critical to each role.

Single Login: Access all asset data from one dashboard or mobile app.

Smart Integration: Products automatically share data and insights with each other.



	OPTIONS FOR INPUT			
	Asset Mgt.	CounterView	CVe AC	CVe RT
QR Code for GPS Location	X		X	X
Asset Management	X	X	X	X
Preventive Maintenance	X	X	X	X
Work Orders	X			X
Spare Parts Management	X			X
Real-Time Data				X
Cloud-Based File Sharing	X	X	X	X
Customizable Dashboards				X
APIs: Share Data with ERP/MES Systems				X
Multilingual Options Available	X	X	X	X
Collects Cycle Counts		X	X	X
Historical Data Reporting			X	X
Mobile App Compatible	X		X	X

Asset Tags

Asset Tags and **Plates** that are affixed to an asset provide access to the ProFile cloud-based database:

- **Asset Management:** Central location to manage, locate, and track asset data based on role.
- **Annual Audits:** Simplify the audit process and reduce travel expenses. ROI in 3-6 months.
- **Improved Communication:** Shared data and files foster communication across roles and locations.

Preconfigured and customizable menu options can track molds, dies, molding machines, end-of-arm tooling, fixtures, and equipment.

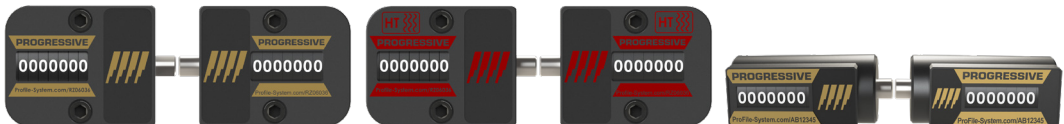
The screenshot displays the ProFile web application interface. At the top, there are navigation tabs for "Assets / View Asset", "Demo Client 1", "Demo Enterprise 1", and "Asset Only Plant". Below this, the asset details for Machine ID P123, Asset ID M12345, and Part Name Wheel are shown. The interface includes a sidebar with navigation icons and a main content area with various tabs like "Properties", "Targets & Limits", "Configuration", and "PM Checklists". The "Generic" section contains fields for Asset Class (Mold), Unique AST # (AST-12345), and Location. The "Mold" section provides specific details such as Part Number (T-876), Part Name (Wheel), Mould Weight (2000), Program Name (Viper), and various cycle and cost metrics.



Every genuine Progressive **CounterView®** has a unique laser-etched “URL/Serial Number” that can be entered into ProFile to deliver these capabilities:

- **Independent Operation:** Full functionality without any other system required.
- **ProFile Enhanced:** Share asset data and files across the supply chain.
- **Proven Reliability**

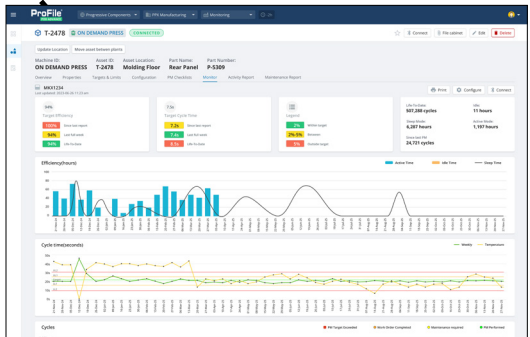
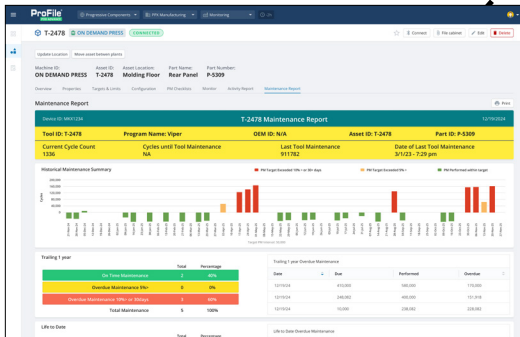
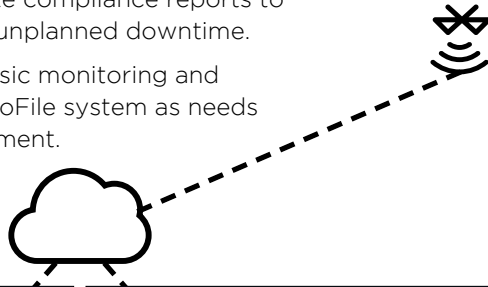
Progressive invented the first cycle counter in 1995 and has grown the product line to exclusively offer both left and right versions in the Standard, High-Temperature, and Round series.

The ProFile software interface is shown on a tablet. The top navigation bar includes the ProFile logo, a notification bell with a red '4', and a user profile icon. The main content area displays asset information for "BM-8976 Press #1" and includes buttons for "Create Work Order" and "Add Parts Consumed". Below this are tabs for "Overview", "Properties", "Targets & Limits", and "PM Checklists". The "Generic" section contains fields for "Unique AST #", "Asset class", "Asset ID", "Monitor", and "Location". The "Blow Mold" section contains fields for "Customer", "Tool ID", "Tool Builder", "Design Rev", and "Tool Owner". At the bottom, there are images of a mold and a map of the United States with a location pin.

CVe Monitor AC (Access)

Track tool activity and view cycle counts on the **CVe Monitor® AC**. Utilize the ProFile app to download KPI Data and wirelessly send to the cloud.

- **Asset Intelligence:** Transform raw data into actionable intelligence and reporting to identify underperforming assets and improvement opportunities.
- **Remove Guesswork:** Know tool history and location.
- **Proactive Maintenance Management:** Schedule preventive maintenance activities and generate compliance reports to extend equipment life and reduce unplanned downtime.
- **Scalable Entry Point:** Start with basic monitoring and seamlessly upgrade to real-time ProFile system as needs grow, protecting your initial investment.

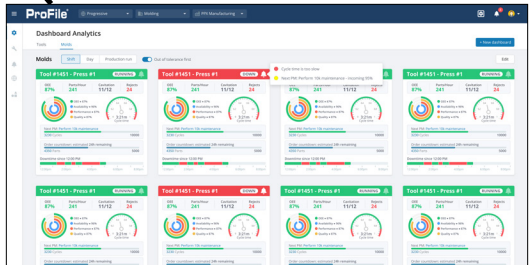
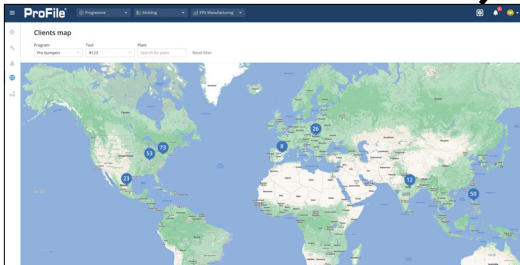
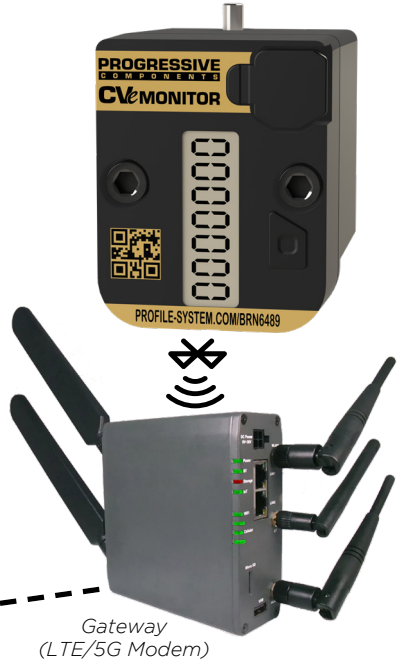


CVe Monitor RT (Real-time)

Progressive's **CVe Monitor® RT** wirelessly provides data to ProFile enabling real-time visibility to performance and key metrics.

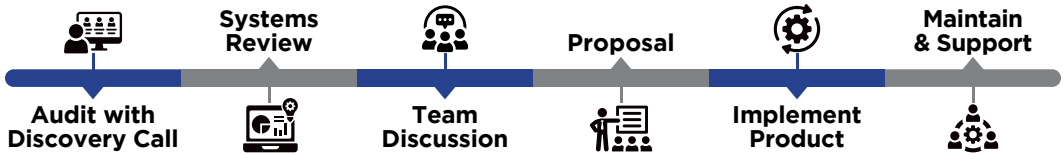
- **Fleet Intelligence:** Monitor entire tool fleets with predictive maintenance insights.
- **Historical Context:** Real-time data gains meaning from ProFile's historical records.
- **Enterprise Integration:** API connectivity to ERP/ MES systems through ProFile.
- **Global Monitoring:** Track assets worldwide from any ProFile-connected device.

Whether tools are across the plant or around the world, critical performance and maintenance reporting is now possible for those responsible for the profitability of their tooling investment.

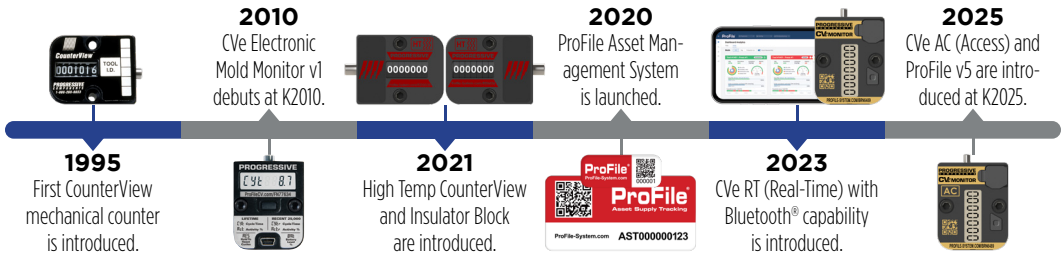


Implementation Roadmap

ProFile's flexibility allows you to grow your system as your needs and budget allow.



Monitoring Milestones



Our Global Team



Sujit Sheth
Monitoring Business Manager
Sujit.Sheth@procomps.com



Alex Ibarra
Technical Product Specialist
Alex.Ibarra@procomps.com



Carlos Saboga
European Technical Sales Mgr
Carlos.Saboga@procomps.com



Lorena Fisher
Specification Implementation Mgr
Lorena.Fisher@procomps.com



Jamie Natter
Business Development Rep
Jamie.Natter@procomps.com



Daniel Ng
Regional Manager—Asia
Daniel.Ng@procomps.com