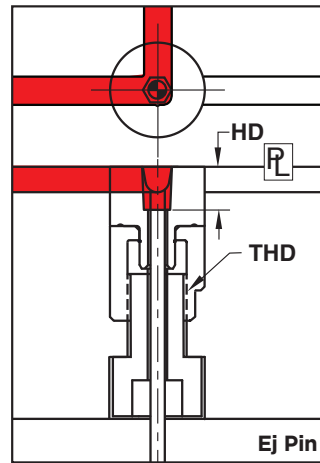
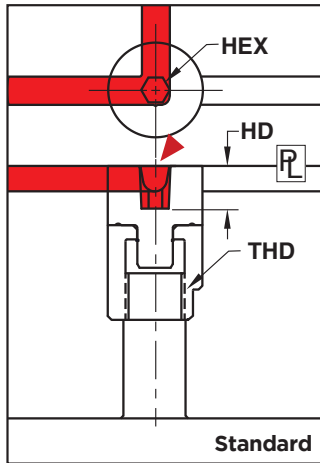


# RUNNER TURN OFF



## APPLICATION GUIDELINES

- Runner Turn Off inserts provide a reliable position of material flow.
- Hex with 2° taper provided for rotating insert.
- Runner Turn Offs utilize detents positioned in 45° increments.
- Machining is straightforward with two flats provided on top and bottom rings to hold in place without risk of spinning.
- Press fit flat (PF) is provided for orientation during installation.
- Recommended runner guidelines are provided on the following page.
- The Ejector Pin versions are supplied with screws. Modify the length to suit.
- For removal, a spare bolt must be used to strike from back in order to overcome the press fit.



▶ CAD insertion point

### Inch Standard

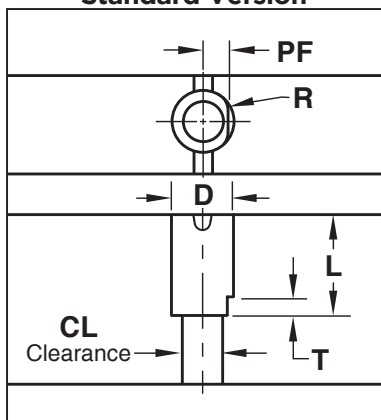
**M** 420 Stainless **H** 30-34 HRC

CATALOG NUMBER	EJ PIN SIZE	D	L	T	R	PF	CL	HEX	HD HEX DEPTH	THD
RT62	—	.625	1.125	.300	.125	.250	.40	5/32	.25	3/8-16
RT62-EP	1/8									
RT100	—	1.000	1.625	.300	.312	.400	.65	1/4	.45	5/8-11
RT100-EP	3/16									

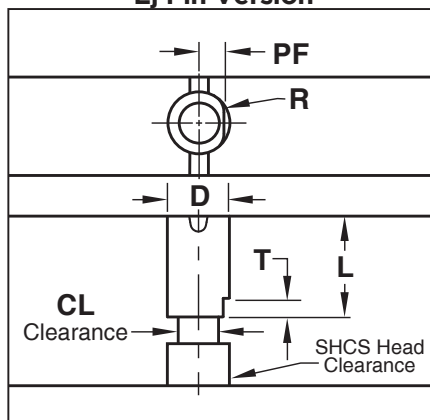
### Metric Standard

CATALOG NUMBER	EJ PIN SIZE	D	L	T	R	PF	CL	HEX	HD HEX DEPTH	THD
RTM16	—	16	28	8	4	6.5	10.8	4	7	M10 x 1.5
RTM16-EP	3.0									
RTM24	—	24	40	8	8	9.5	16.8	6	12	M16 x 2.0
RTM24-EP	4.5									

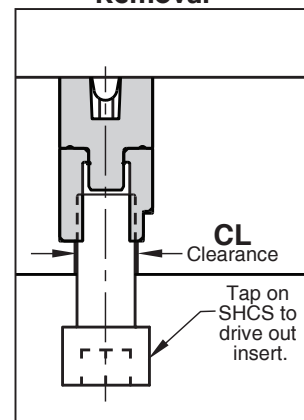
### Machining for Standard Version



### Machining for Ej Pin Version



### Removal

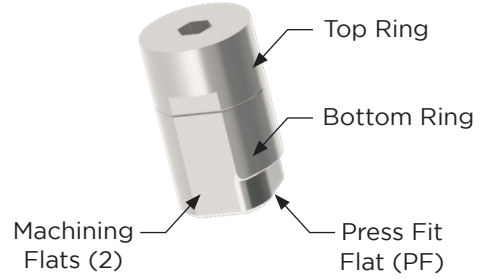




# RUNNER TURN OFF

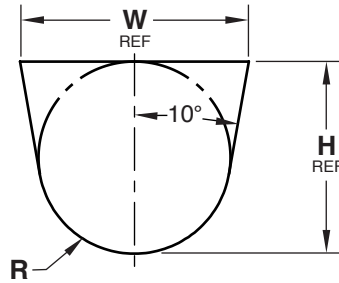
## RUNNER MACHINING GUIDELINES

- Runner Turn Offs have two machining flats to prevent spinning when holding the assembly in a vise.
- Refer to the table below for recommended runner geometry for the inch standard runners.
- Maximum machining depth (H) is .313"/8mm.



### Inch Standard

RUNNER SIZE	H	R	W	AREA (SQ. INCH)
3/32	.094	.047	.112	.008
1/8	.125	.063	.149	.015
5/32	.156	.078	.186	.023
3/16	.188	.094	.223	.033
7/32	.219	.109	.261	.045
1/4	.250	.125	.298	.059
9/32	.281	.140	.335	.075
5/16	.313	.156	.372	.092



### Metric Standard

RUNNER SIZE	H	R	W	AREA (SQ. MM)
3.2	3.2	1.6	3.81	9.7
4.0	4.0	2.0	4.77	14.8
4.8	4.8	2.4	5.72	21.8
6.4	6.4	3.2	7.63	38.7
8.0	8.0	4.0	9.53	59.0

### Possible Runner Configurations

