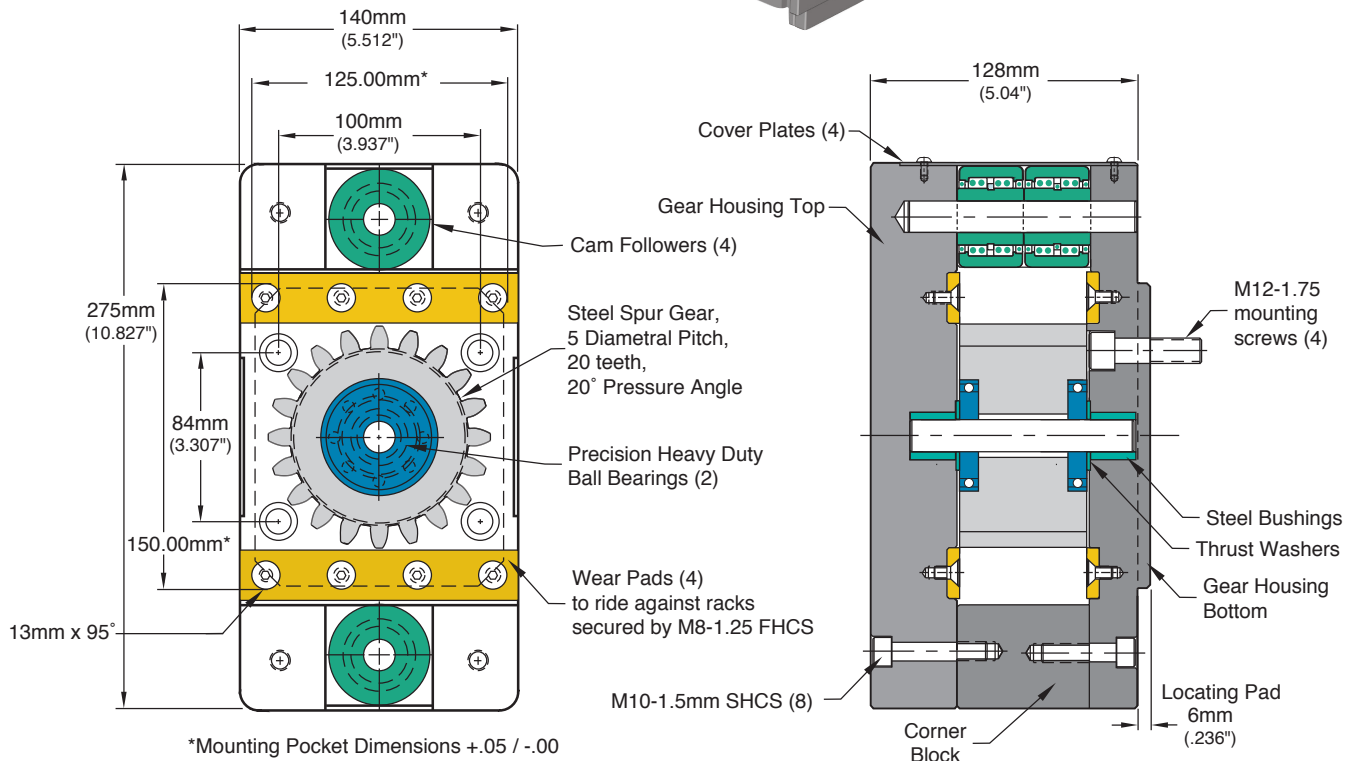
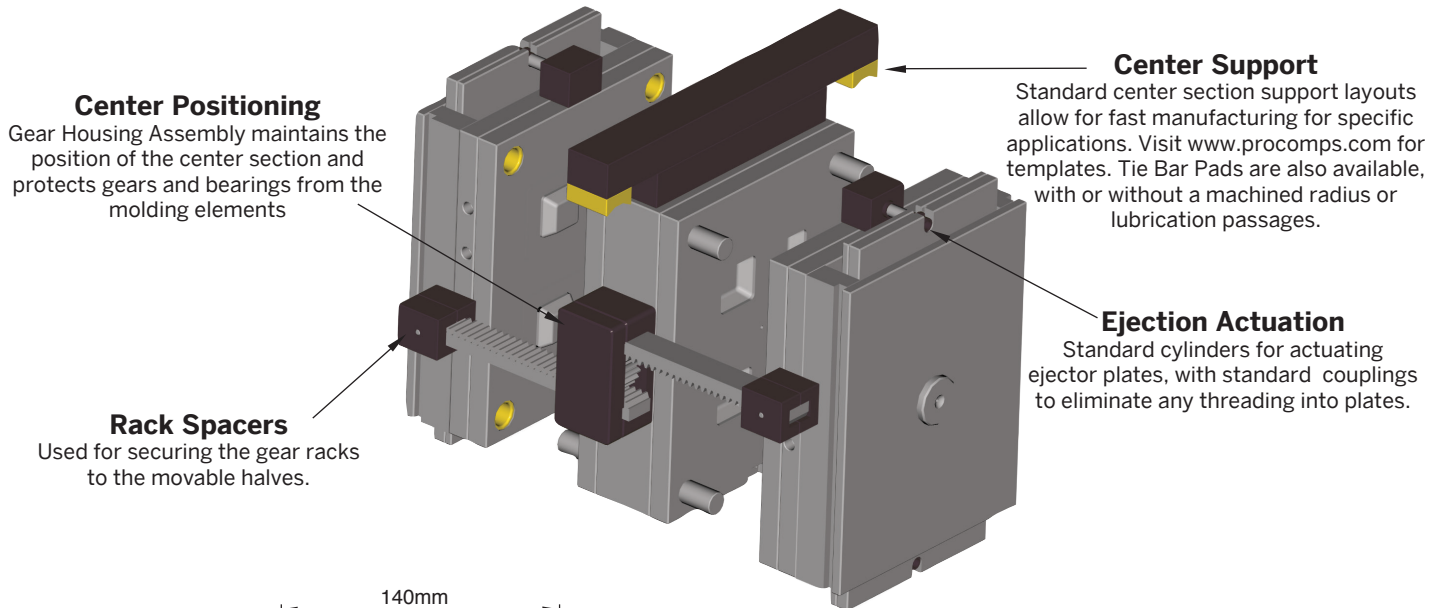




STACKIT® STACK MOLD SYSTEM

Introducing a system for efficiently designing, building, and maintaining stack molds. The product range addresses Center Section Positioning, Center Section Support, and Ejector Actuation. Available as standard components with center support systems made to order.



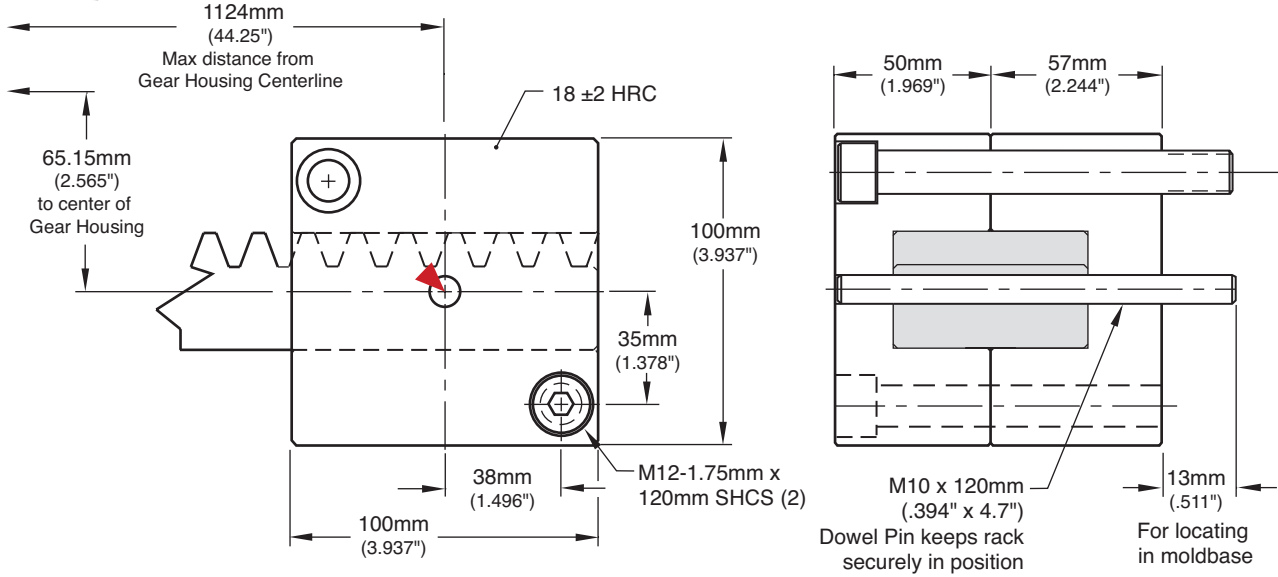
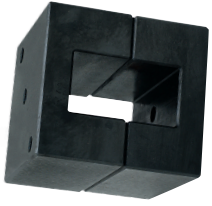
Design Installation Guidelines:

- Max center section effective weight per StackKit pair is 10,000 lbs.
- Ensure mold is within maximum projected weight of molding machine
- When mounting racks to a mold ensure both sides are timed equally
- Install two gear housings in center, as shown above. For large molds, four housings should be installed—two per side.

CATALOG NUMBER	DESCRIPTION
SK-GHA-250	Gear Housing Assembly

Replacement parts are available. Contact Customer Service for availability at CustomerService@procomps.com.

STACKIT® RACK SPACER

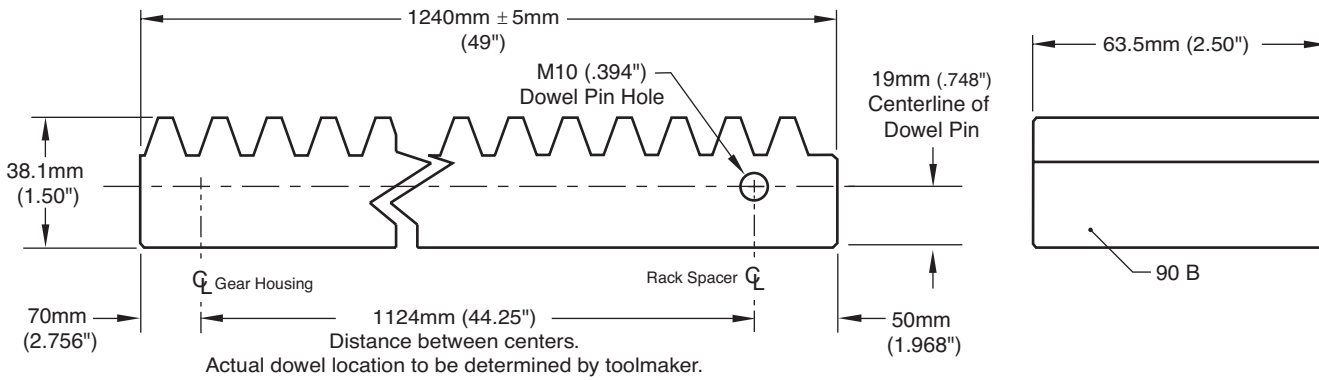


M A-36 **H** Pre-Hard **S** Black Oxide

CATALOG NUMBER	DESCRIPTION
SK-RSA-250	Rack Spacer Assembly

Screws and locating dowel included. ▶ CAD insertion point

STACKIT® RACK



M CRS

CATALOG NUMBER	DESCRIPTION
SK-RC-250	Rack (Sold Individually)

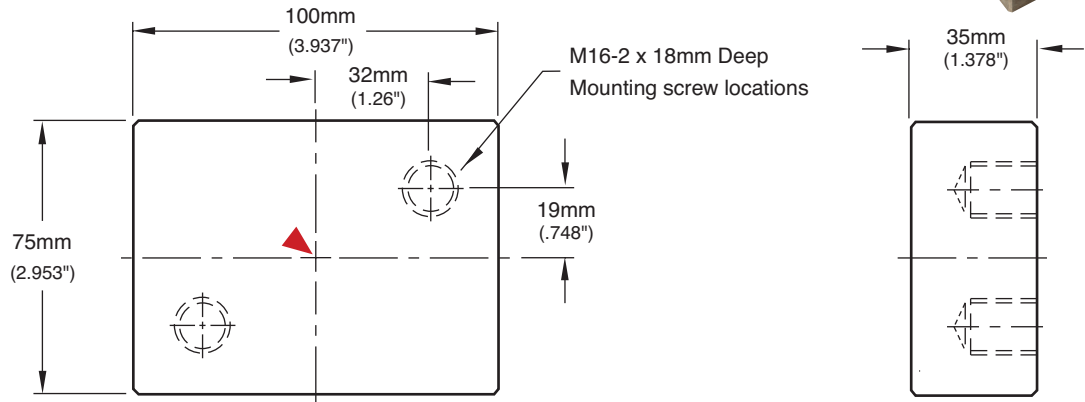


STACKIT® TIE BAR PADS



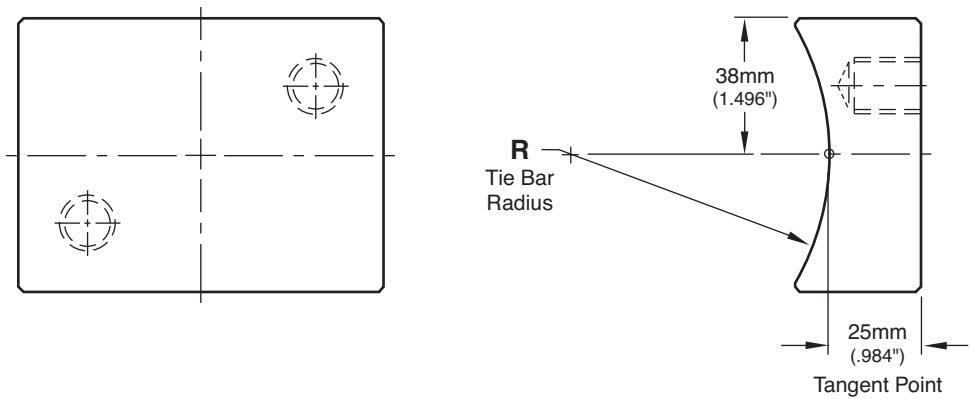
SK-TBP-35

Tie Bar Pad Blanks



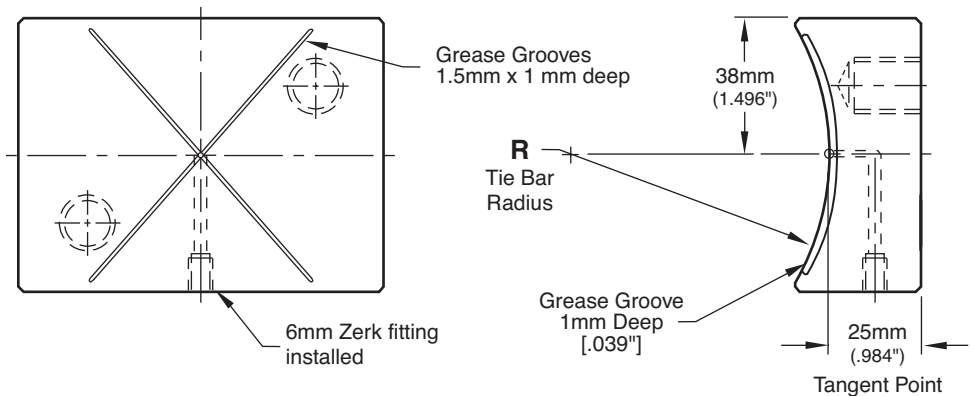
SK-TBP-R

Tie Bar Pad with finished radius. Please specify “-R” when ordering.



SK-TBP-RG

Tie Bar Pad with finished radius, grease grooves, and zerk fitting. Please specify “-RG” when ordering.



M CA954 Solid Bronze

CAD insertion point

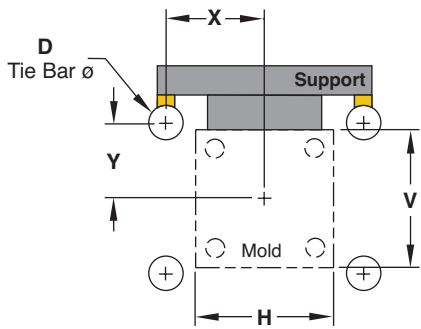
CATALOG NUMBER	DESCRIPTION
SK-TBP-35	Tie Bar Pad Blanks (No Radius)
SK-TBP-R	Tie Bar Pads with machined radius
SK-TBP-RG	Tie Bar Pads with machined radius, grease grooves and zerk fitting

Sold individually.

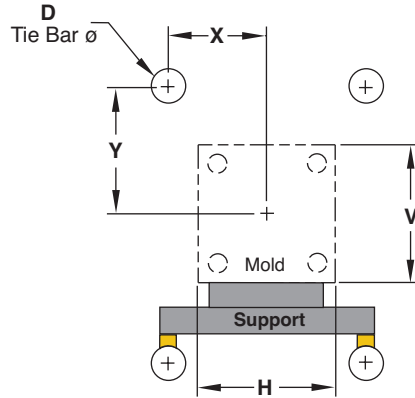
STACKIT® CENTER SUPPORT SYSTEMS

Center Supports augment the pin and bushing engagement between the center section and movable mold halves. Manufactured for specific applications out of AISI 4140, Progressive center sections utilize standard layouts, templates, and components.

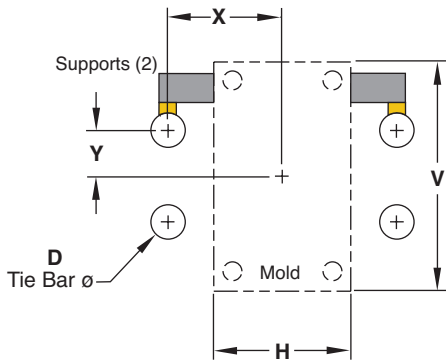
Style 1
Top Reach Support



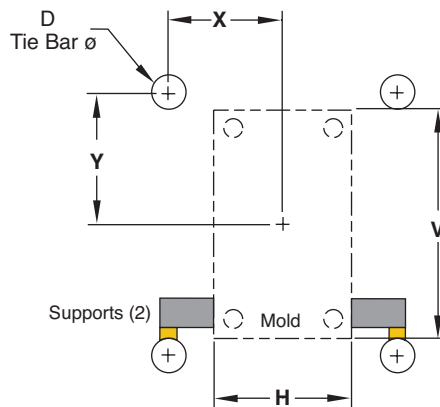
Style 2
Bottom Reach Support



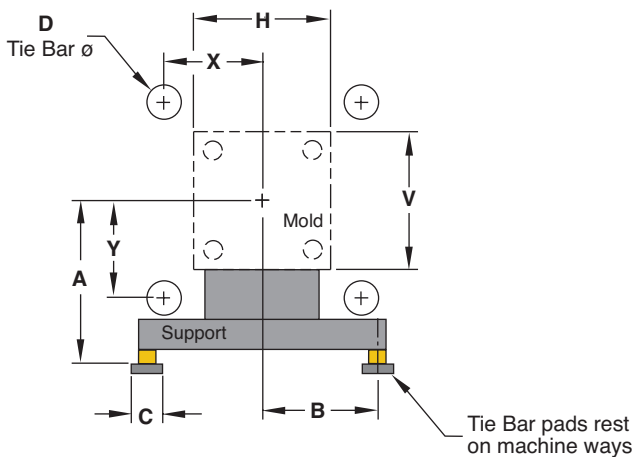
Style 3
Side Support (Top)



Style 4
Side Support (Bottom)



Style 5
Way Support

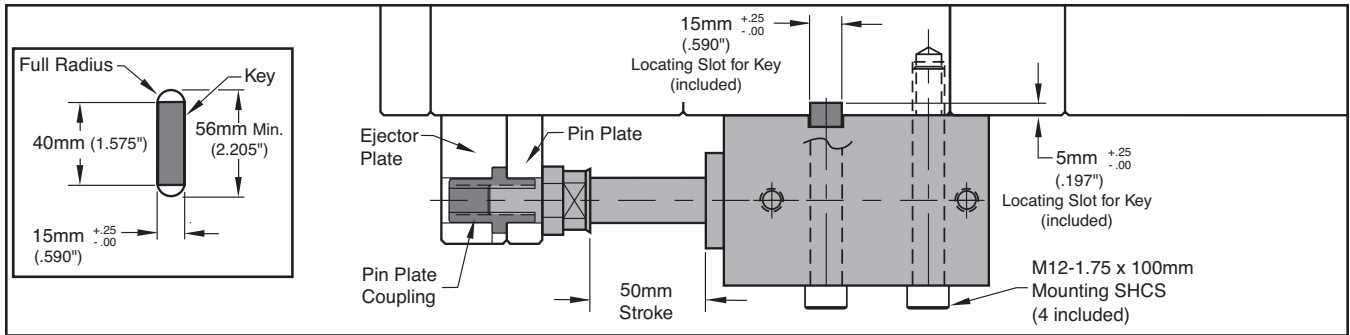


To obtain a quote:

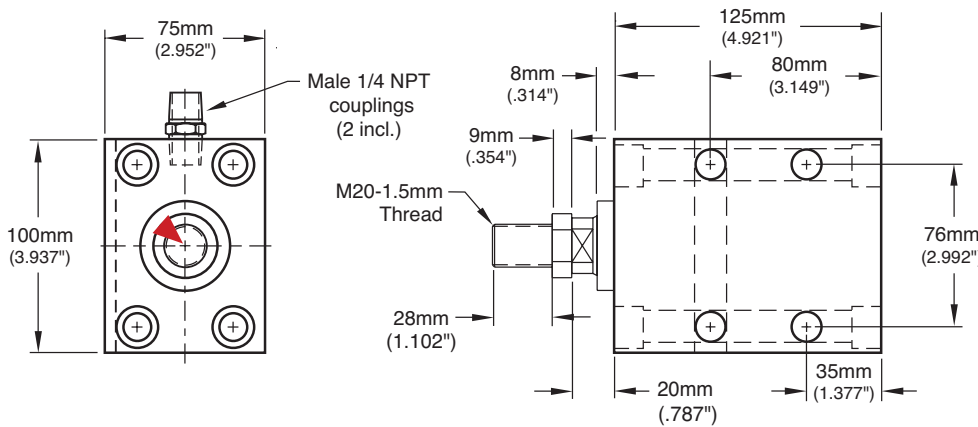
1. Select the style of center support system based on the general press layout and preference.
2. Determine the variables based on the Graphics for the corresponding support required.
3. Send the information via email to tech@procomps.com and an Applications Engineer will provide pricing and turnaround for the quantity required.



STACKIT® EJECTION ACTUATION



CYLINDERS



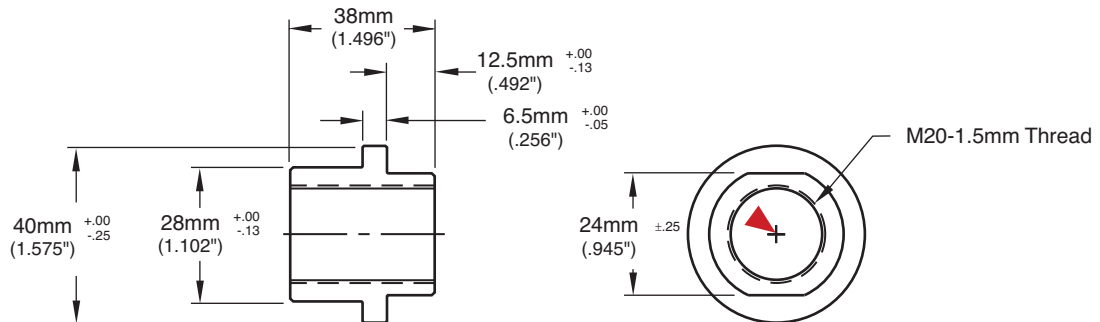
Specifications:

- 50mm (2") Stroke
- Rated up to 3200 psi
- Temperature: 220° F (100° C) max
- Includes (2) NPT couplings and Locating Key

▶ CAD insertion point

CATALOG NUMBER	DESCRIPTION
SK-CYL-50	50 mm Block Cylinder

PIN PLATE COUPLINGS



M AISI 4140 **S** Black Oxide

▶ CAD insertion point

CATALOG NUMBER	DESCRIPTION
SK-PPC-20	M20-1.55 mm Pin Plate Coupling