

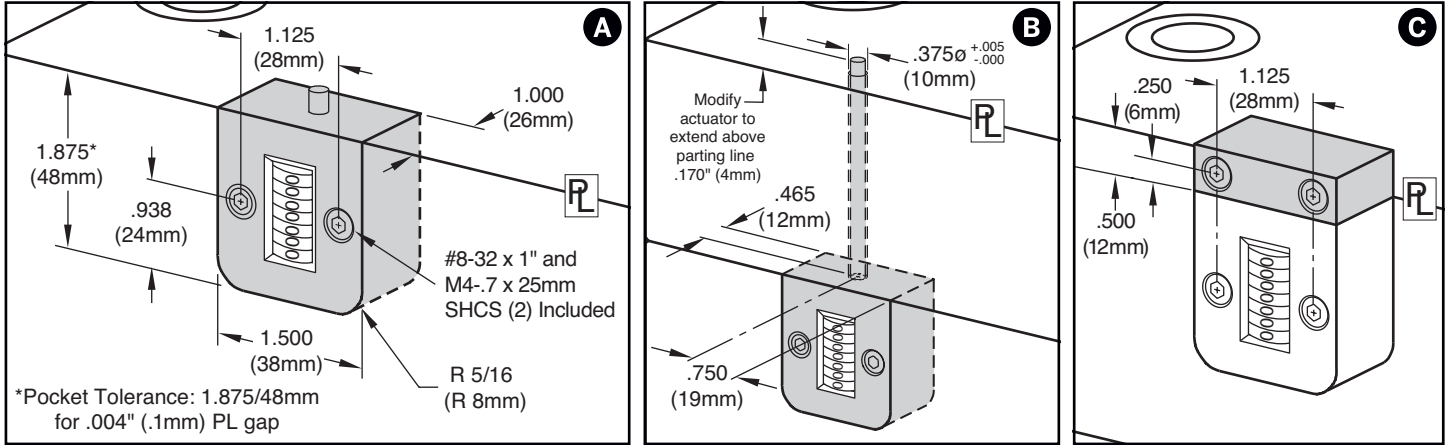
COUNTERVIEW® S-SERIES



Progressive's CounterView positively monitors mold activity, validates process monitoring data, and assists mold maintenance procedures.

- Maximum operating temperatures:
 - 250° F (120° C) Standard CounterView
 - 375° F (190° C) High Temp CounterView
- Counter: Non-resettable mechanical, 7-digit
- Available for installation on the movable or stationary halves and with extensions.
- For heat protection, refer to the Insulators available on pages F-10 and F-11.

M Glass-filled Nylon housing



MOUNTING OPTIONS

Parting Line Mount	A	Parting line mount makes unit easily visible to operator.
Internal Extension Mount	B	Machinable 8" (200mm) included extension rod allows installation in support plate or rail. Available with Standard CounterViews only.
External Mount	C	No pocket machining necessary. Designed specifically for retrofit applications. Order the Parting Line Mount and the CVE-EXT Block as shown below.

Operator Side: Movable Half / B Side



CATALOG NUMBER	VERSION & MOUNTING STYLE
CVPL-B	Standard: Parting Line
CVIN-B	Standard: Internal Extension
CVPLHT-B	High Temp: Parting Line

Screws included.

Operator Side: Stationary Half / A Side



CATALOG NUMBER	VERSION & MOUNTING STYLE
CVPL-A	Standard: Parting Line
CVIN-A	Standard: Internal Extension
CVPLHT-A	High Temp: Parting Line

Screws included.

Note: CounterViews can be ordered pre-set to a specific cycle count. Contact Customer Service for more information.

ACCESSORIES



CATALOG NUMBER	DESCRIPTION
CVE-EXT	External Mounting Block including #8-32 x 1" (2) and M4 x 25mm screws (2)
CVID	ID Plate for CounterView



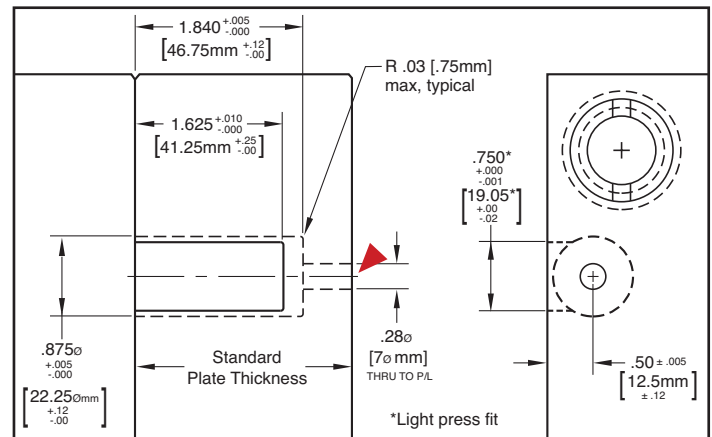
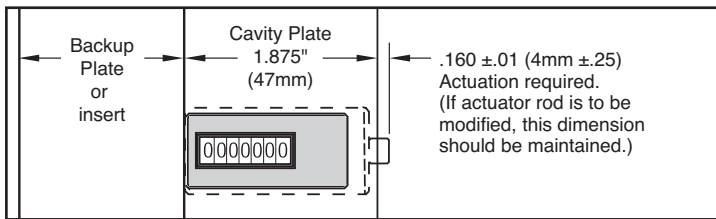
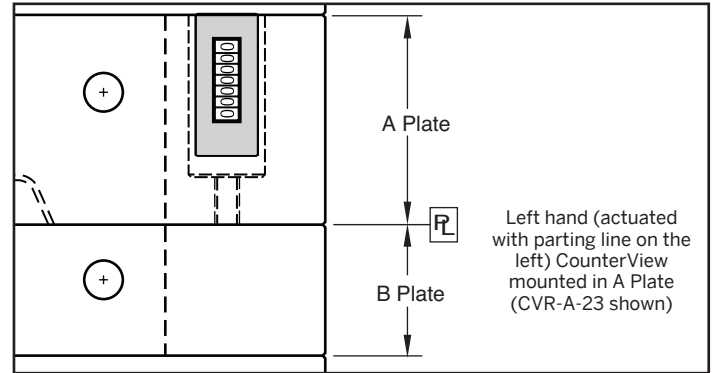
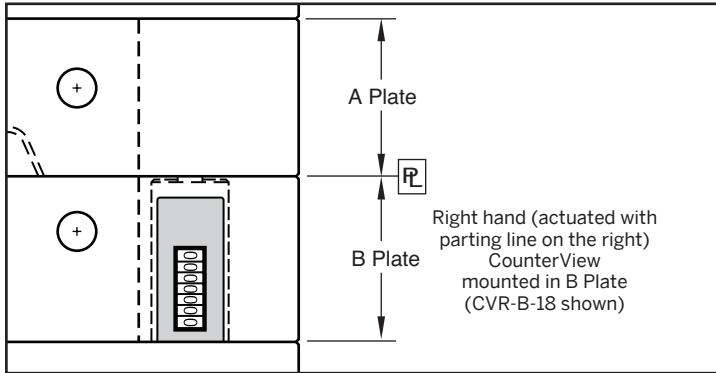
COUNTERVIEW® R-SERIES

Progressive's CounterView positively monitors mold activity, validates process monitoring data, and assists mold maintenance procedure

- Maximum operating temperature is 250 °F (120 °C). For heat protection, refer to the Insulators available on pages F-10 and F-11.
- Counter: Non-resettable mechanical, 7-digit



M Glass-filled Nylon housing



The R-Series CounterView can be installed in the A or B plates with a minimum thickness of 1.875" (47mm). Larger plates utilize a threaded rod (included with each) that is pre-machined to the appropriate length for standard plate thicknesses to provide consistent actuation.

▶ CAD insertion point

Operator Side: Movable Half / B Side



Inch Standard		Metric Standard	
CATALOG NUMBER	Nominal Plate Thickness	CATALOG NUMBER	Nominal Plate Thickness
CVR-B-18	1.875	CVR-B-56	56
CVR-B-23	2.375	CVR-B-66	66
CVR-B-28	2.875	CVR-B-76	76
CVR-B-33	3.375	CVR-B-96	96
CVR-B-38	3.875	CVR-B-116	116
CVR-B-43	4.375	CVR-B-196	196
CVR-B-83	8.375		

Operator Side: Stationary Half / A Side



Inch Standard		Metric Standard	
CATALOG NUMBER	Nominal Plate Thickness	CATALOG NUMBER	Nominal Plate Thickness
CVR-A-18	1.875	CVR-A-56	56
CVR-A-23	2.375	CVR-A-66	66
CVR-A-28	2.875	CVR-A-76	76
CVR-A-33	3.375	CVR-A-96	96
CVR-A-38	3.875	CVR-A-116	116
CVR-A-43	4.375	CVR-A-196	196
CVR-A-83	8.375		

Each R-Series CounterView includes the actuator. All except CVR-B-18 and CVR-A-18 require attachment of the actuator rod to the threaded CounterView unit.