

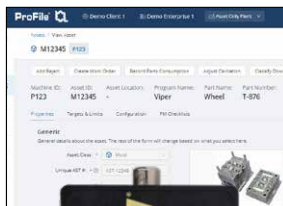


PROFILE MAINTENANCE MANAGEMENT

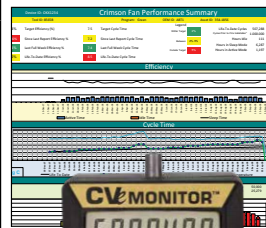
Asset Mgt.
Page F-6



CounterViews
Page F-10



CVe OnDemand
Page F-7



CVe Real-Time
Page F-2



QR Code for GPS Location	X			X
Asset Management	X	X	X	X
Preventive Maintenance, Work Order and Spare Parts Management	X		X	X
Real-Time Data				X
Cloud-Based File Sharing		X	X	X
Customizable Dashboards				X
APIs for Data Sharing With ERP/MES Systems				X
Multilingual options available	X		X	X
Requires PC-Based Software			X	
Collects Cycle Counts		X	X	X
Historical Data Reporting				X
Mobile App Compatible	X			X

1. Start with any platform based on your timeline, budget and/or resources. Contact **SystemMonitoring@procomps.com** to learn what platform is best for you and your customers.
2. Build and add additional systems at your own pace with various levels of visibility.
3. Progressive Components' Global Team will provide assistance and support from installation to production.

CVe MONITOR® RT

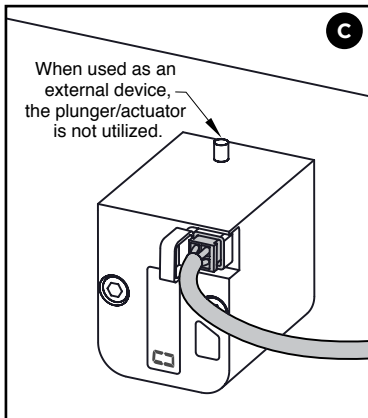
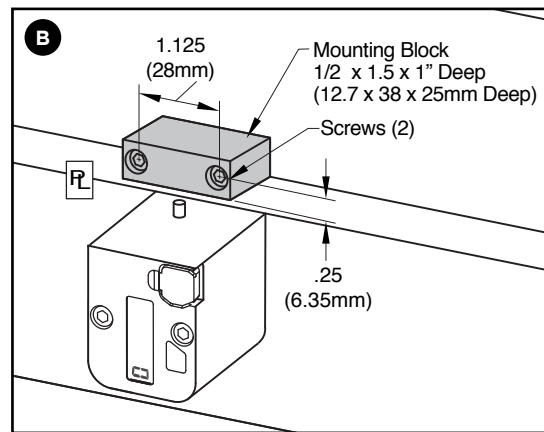
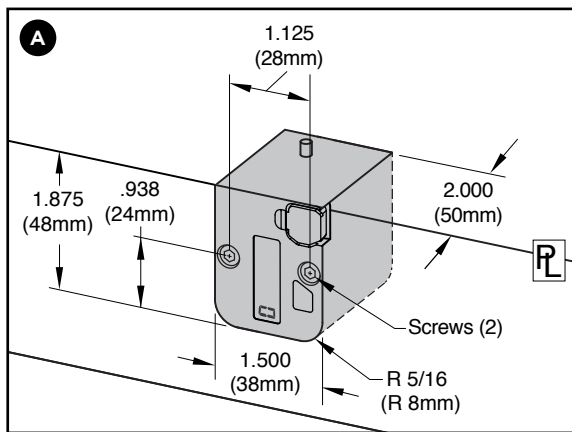
REAL-TIME MOLD MONITORING



APPLICATION GUIDELINES

- Progressive's Real-Time CVe Monitor tracks tool activity, allowing users to view the tool's cycle count on the display while also wirelessly sending data to the cloud.
- The QR code and unique serialization on every monitor aligns to a specific tool via the ProFile Real-Time Monitoring System (page F-3) and OnDemand App (page F-9).
- Includes two replaceable batteries.
- Display orientation can change on the device for either A side or B side installation. Water resistant with an ingress protection rating of IP52.
- Maximum temperature: 190°F (90°C).

MOUNTING OPTIONS



Parting Line Mount	A	Parting line mount makes unit visible to operator. Display orientation can be changed by pressing the button on the face.
External Mount	B	No pocket machining necessary. Designed specifically for retrofit applications. Order the CVe-RT and the CVe-EXT Block as shown below.
Non-Mold Use	C	The CVe Monitor can be wired to a PLC or other modules to act as a switch, not requiring any activation via an open/close event. See page F-4 for cable options.

CATALOG NUMBER	DESCRIPTION
CVe-RT	Real-Time CVe Monitor including #8-32 x 2" SHCS (2) and M4 x 50mm SHCS (2)

CATALOG NUMBER	DESCRIPTION
CVe-EXT	External Mounting Block including #8-32 x 1" SHCS (2) and M4 x 25mm SHCS (2)



PROFILE[®]

REAL-TIME MONITORING

PROFILE SYSTEM FEATURES:

Global Overview of Assets

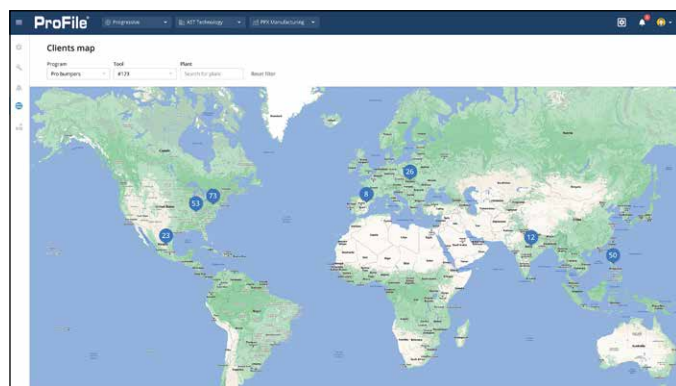
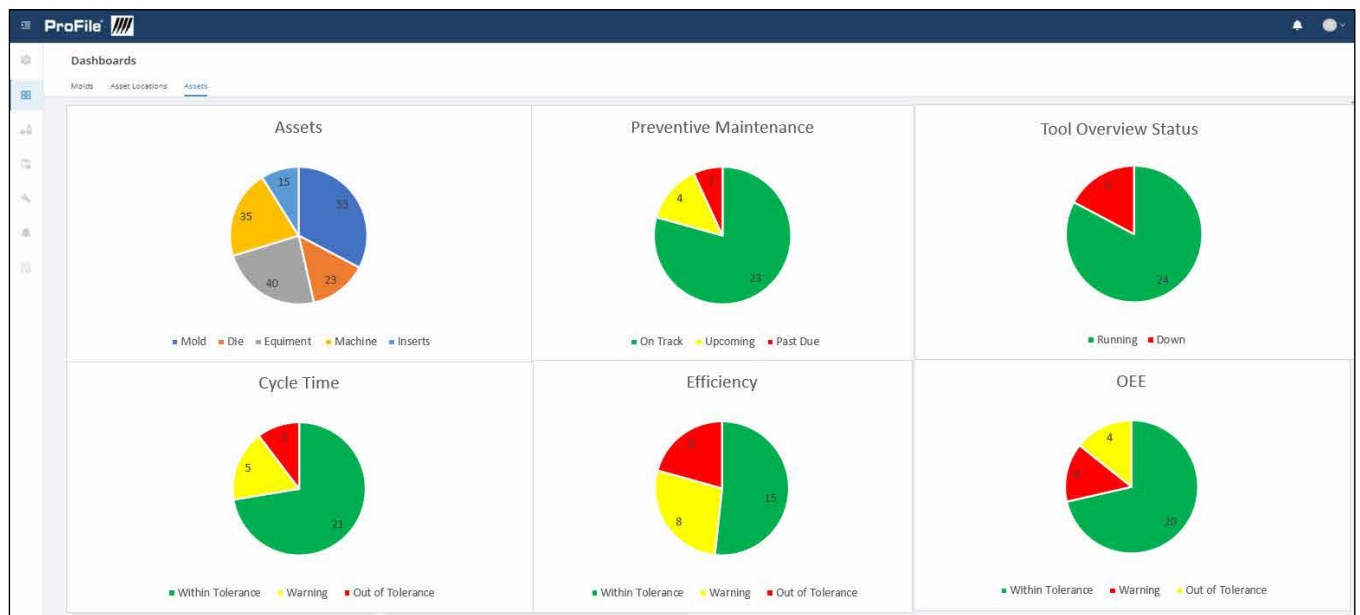
- Real time visibility of performance and key metrics.
- Monitor all assets: Molds, Machines, Dies and Equipment.
- Track mold condition, data, and GPS location.

Mold Maintenance & Repair

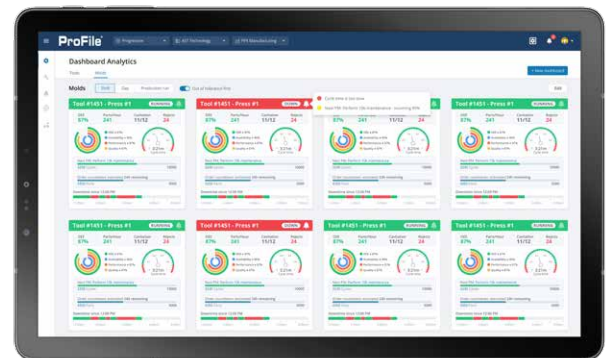
- Track Preventive Maintenance adherence.
- Process Work Orders using the integrated system.
- Track Spare Parts Inventory and Parts Consumed.
- Generate true cost of maintenance report.

Data Sharing

- Website can be accessed anywhere the internet is available.
- ProFile Mobile App for iOS and Android allows easy access.
- Filing Cabinet with 10GB per asset facilitates document sharing with stakeholders based on their role.
- Interface ProFile with existing ERP/MES systems using APIs.
- Utilize APIs to connect to report generating platforms.



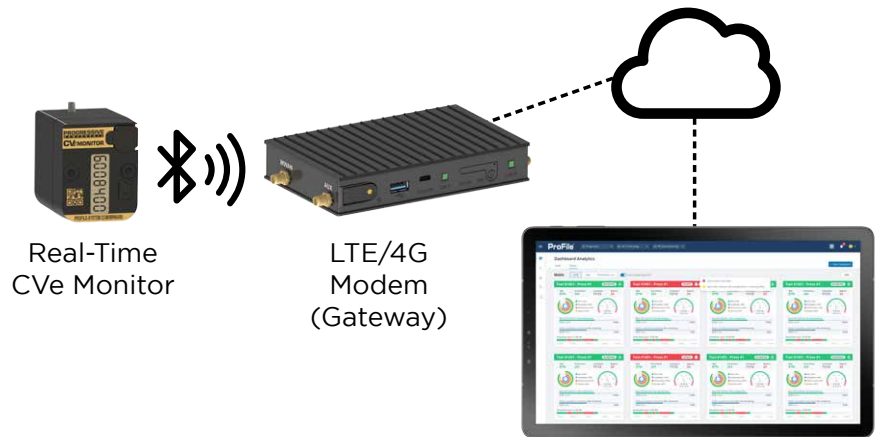
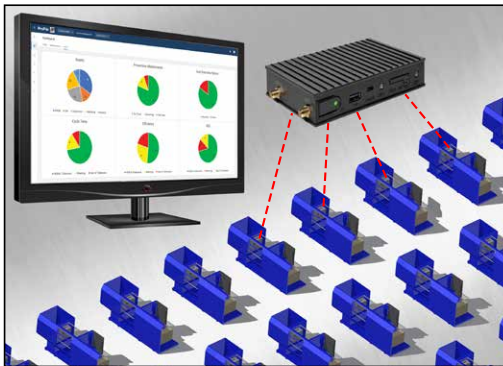
Global view of all assets by location, quantity, and class.



Customizable Performance Dashboard showing status and KPIs.

PROFILE® REAL-TIME MONITORING

For real-time monitoring of tools, Progressive provides hardware and website access for OEMs and molders utilizing the Real-Time CVE Monitors. For alternative OnDemand App use, refer to page F-9.







HARDWARE

Gateway

- Bluetooth® technology pushes tool data from the CVE Monitor to the cloud for real-time reporting.
- Utilizes FCC and CE certified internal components.
- One (1) Gateway per facility collects data from all CVE Monitors present on tools via Bluetooth transmissions.
- Range Extenders are available for long distances.
- Accesses the internet via cellular technology.
- Sends data to the customer’s web portal consistently.
- Includes SIM Card and related programming for regional use.

Cables & Accessories

- The PLC cable allows for connection from the CVE Monitor to the PLC for assembly or decorating.
- To connect to an external switch or when using with high speeds and heat applications, utilize the cable with the Magnetic Switch connection.
- Battery replacement kit includes installation instructions.
- Accessories below are exclusively used with the Real-Time CVE Monitor. Contact SystemMonitoring@procomps.com for a consultative quote on all items required for a single or multiple locations.

CATALOG NUMBER	DESCRIPTION	IMAGE
CVEL-GWBT	Real-Time Gateway North America version	
CVEL-GWBT-IN	Real-Time Gateway International version	
CVEL-BTEXT	Range Extender: RF Adapter to USB	
CVEL-BT-PLC	Cable: PLC Molex® Connector to White/Green/Black/Red Wires Wire: 72" (1800mm) Long	
CVEL-BT-SWT	Cable: PLC Molex® Connector to Magnetic Switch Switch & Magnet: .9"x.55" (23mmx14mm) Wire: 72" (1825mm) Long	
CVE-BTREPLKIT	Battery Replacement Kit for the Real-Time CVE Monitor Includes 2 batteries, housing seal, and Torx® wrench	

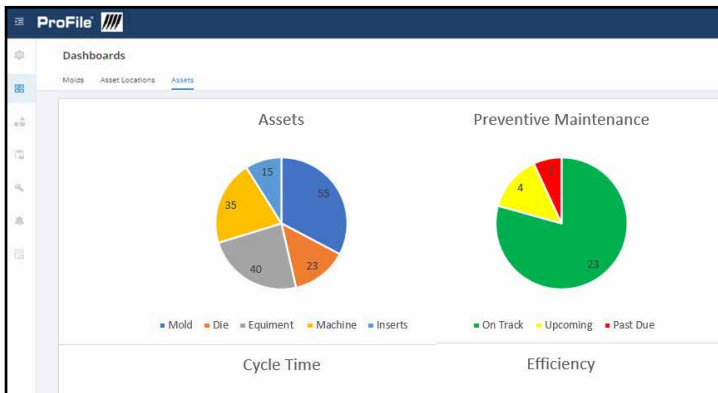
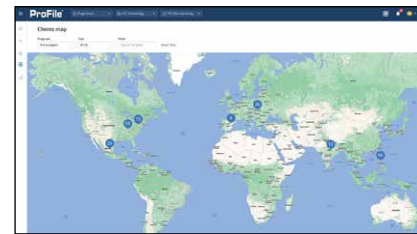
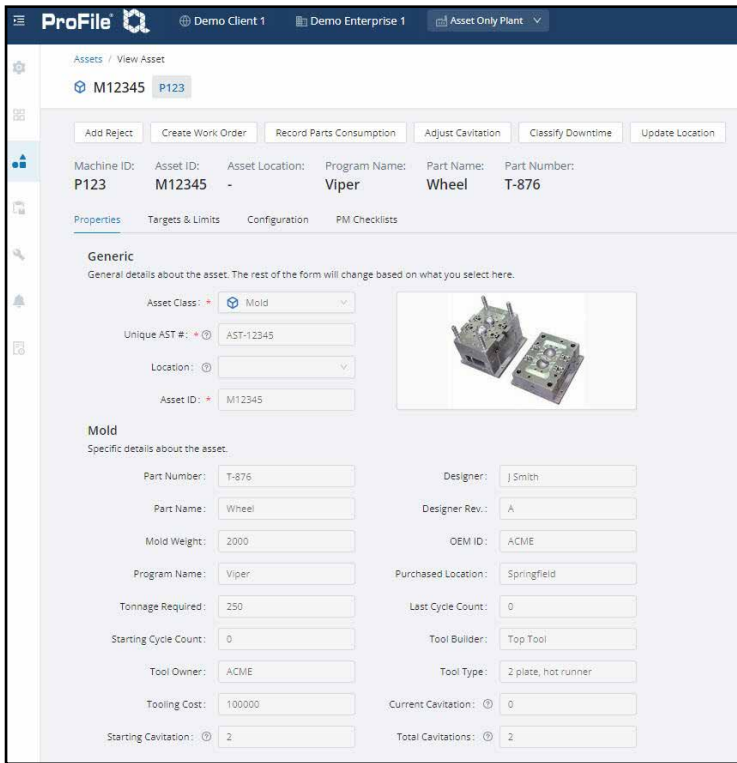


PROFILE® ASSET MANAGEMENT SYSTEM

The ProFile Asset Management System is a comprehensive solution for tracking assets. The cloud-based system organizes assets and stores related documents and photos, while also logging GPS locations.

Several options of Asset Tags and Plates are offered on the following page.

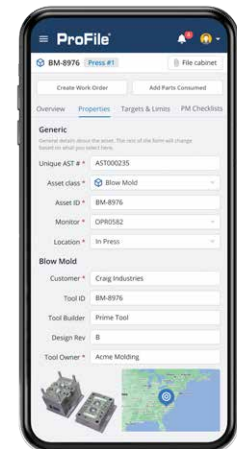
- Different asset types require different types of data. ProFile offers five asset classes (molds, dies, machines, equipment, and inserts) with customizable asset types under each class. There are also several user-defined fields to give users increased flexibility.
- Each asset page includes a filing cabinet to store critical documents associated with that asset. These documents can be easily accessed and shared by users with permissions. Users have 10GB of storage associated with their asset database.
- When logging in to ProFile via ProFile-System.com, the dashboard shows a breakdown of assets in the system by asset class. Clicking on any of the asset classes on the chart will drill down to the detailed listing. Also, the dashboard shows Preventive Maintenance status of assets for easy access to overdue PMs.
- See a complete list of all assets in one place or choose the tab for the asset class filter. All fields on the tool listing are sortable using the header fields.



Asset ID	Asset Image	Upcoming PM	Last GPS Scan	Last Price	Current Price	Part Number	Part Name	Action
4077728			1/19/2023, 11:47:03 PM	PL-PR553.01		1.826	Wheel	Switch
4078005			2/3/2022, 10:40:41 AM	PL-PR553.01	1.9927		Cover Plate	Switch

Mobile Functionality and GPS

- Scan the QR code on the Asset Tags or Plates on your mobile device to see a summary view of the asset. To see additional data, press the Details button. Every time a QR code is scanned, the GPS location is pushed to the cloud and recorded on the asset page.
- Preventive Maintenance and Work Orders can be scheduled.
- Users can create checklists and assign them to assets to view how many cycles or the date assets require maintenance. To schedule maintenance or other activities, Work Orders can be utilized to track unscheduled maintenance and repairs for assets.
- The ProFile Asset Management system can be used with both CounterView and CVE Monitoring devices via their unique serial number.
- For a demonstration or to set up an account for ProFile system access, contact SystemMonitoring@procomps.com.



PROFILE® ASSET TAGS AND PLATES

SPECIFICATIONS: STANDARD TAGS

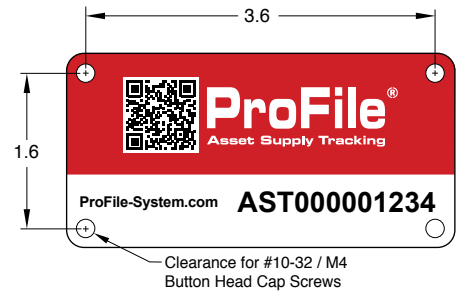
- ProFile account required and established at time of purchase. More information on the Asset Management system can be found on page F-5.
- Two sizes available. Small versions fit on CounterViews. Refer to page F-10 for CounterView specs.
- 8 mils thick aluminum, brushed finish.
- 3M 467 adhesive can be affixed to standard tool steel. Max temp 300°F (150°C).
- Serial number (AST prefix) is established by Progressive and aligns to customer-specific asset identification within ProFile-System.com.
- Minimum order quantity is 25 tags of any type and must be purchased in increments of 25.



CATALOG NUMBER	SIZE	DESCRIPTION
AMTG-S24	4" x 2" (101.6mmx50.8mm)	ProFile Asset Tag-Large
AMTG-S15	1.25" x .5" (31.7mmx212.7mm)	ProFile Asset Tag-Small

SPECIFICATIONS: STANDARD PLATES

- ProFile account required and established at time of purchase. More information on the Asset Management system can be found on page F-5.
- 20 mils thick aluminum.
- Provides heat resistance for assets up to 600°F (315°C).
- Bolts to mold base/asset with included button head cap screws.
- Minimum order quantity is 25 plates and must be purchased in increments of 25.



CATALOG NUMBER	SIZE	DESCRIPTION
AMTG-P24	4" x 2" (101.6mmx50.8mm)	ProFile Asset Plate

CUSTOM TAG & PLATE ORDERING INFORMATION

- Specifications are same as standard Tags and Plates, shown above.
- Layout is as shown at left below, but the text can vary based on your requirements as shown on the sample at right. Also, the color can be selected to match your company's logos. All custom Tags/Plates include the QR code and unique serial number. Refer to the template at procomps.com to submit your quote request.
- Minimum order quantity = 50 for 4x2" Plates and Tags; 100 for the 1.25 x .5" tags.
- Delivery for initial order is 3 weeks, including proof time.

