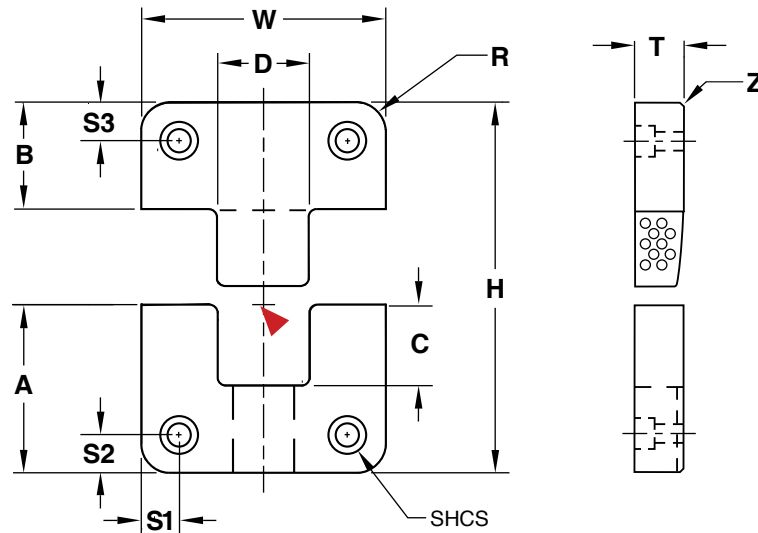
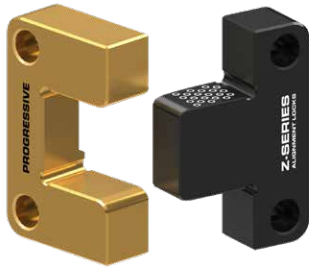


SIDE LOCKS
Z-SERIES



Inch Standard

Female: **M** D-2 **H** Core: 58-62 HRC, Surface: 80 HRC **S** Titanium Nitride Coated
 Male: **M** H-13 **H** Core: 42-48 HRC, Surface: 70 HRC **S** Black Nitride

▶ CAD insertion point

CATALOG NUMBER	T +.000 -.002	W +.0000 -.0004	A +.000 -.002	B +.000 -.002	C	D .0001/.0003 CLEARANCE PER SIDE	H +.000 -.004	R POCKET RADIUS	S1 ±.01	S2 ±.01	S3 ±.01	Z	SHCS
SL37X100	.375	1.000	1.125	.875	.62	.500	2.000	.187	.25	.25	.25	.015	#10-32 x 1/2
SL50X125	.490	1.250	1.125	.875	.68	.500	2.000	.187	.25	.25	.25	.03	#8-32 x 5/8
SL50X150	.500	1.500	.875	.875	.56	.563	1.750	.187	.25	.25	.25	.03	#8-32 x 5/8
SL50X200	.500	2.000	1.375	.875	.86	.750	2.250	.187	.31	.31	.31	.03	#10-32 x 5/8
SL62X150	.620	1.500	.870	.870	.41	.500	1.74	.187	.28	.28	.43	.03	1/4-20 x 3/4
SL62X200	.620	2.000	.870	.870	.41	.680	1.74	.187	.37	.37	.43	.03	1/4-20 x 3/4
SL75X300	.750	3.000	1.875	.875	1.18	1.250	2.750	.250	.37	.37	.37	.03	1/4-20 x 3/4
SLC75X300	.745	3.000	1.370	1.360	.68	1.000	2.73	.187	.37	.68	.68	.03	3/8-16 x 1
SL100X400	1.000	4.000	2.375	1.375	1.43	1.500	3.750	.500	.50	.50	.50	.03	3/8-16 x 1
SL125X500	1.250	5.000	2.875	1.375	1.75	2.000	4.250	.500	.62	.62	.62	.03	1/2-13 x 1-1/4
SL150X600	1.500	6.000	2.875	1.375	1.87	2.500	4.250	.500	.62	.62	.62	.03	1/2-13 x 1-1/2

Screws included.

Metric Standard

CATALOG NUMBER	T +.00 -.05	W +.00 -.01	A +.00 -.05	B +.00 -.05	C	D .002/.008 CLEARANCE PER SIDE	H + 0.0 - 0.1	R POCKET RADIUS	S1 ±.25	S2/S3 ±.25	Z	SHCS
SLM16X50	16	50	21.5	21.5	13	17	43	5	8	11	.8	M6-1.0 x 18
SLM19X75	19	75	36	36	22.5	25	72	5	12.5	18	.8	M10-1.5 x 20
SLM19X100	19	100	45	45	30	35	90	5	15	22	.8	M10-1.5 x 20
SLM25X125	25	125	45	45	28.7	35	90	5	20.5	22	.8	M10-1.5 x 25

Screws included.

ALTERNATIVE CONFIGURATIONS AVAILABLE

- To order Shuttle Mold sets or special male/female configurations, refer to page C-11.
- Made-to-order Side Locks can be quoted using the templates at procomps.com.