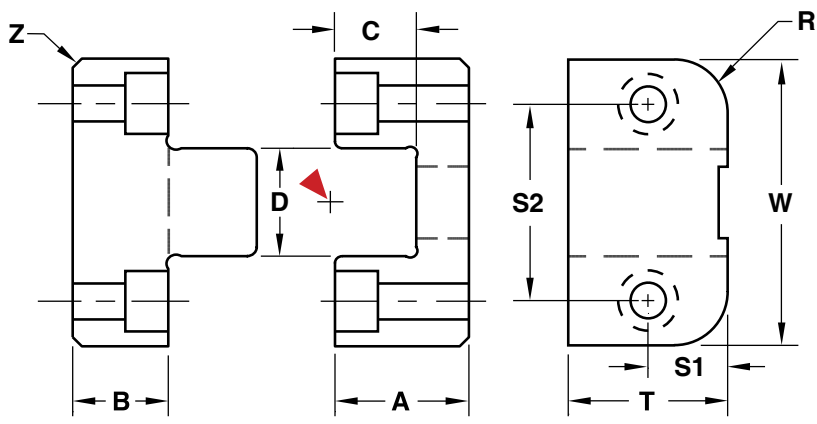
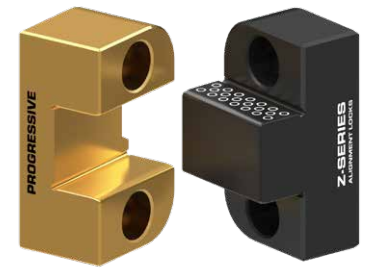


**TOP LOCKS**  
**Z-SERIES**



▶ CAD insertion point



Female: **M** D-2 **H** Core: 58-62 HRC, Surface: 80 HRC **S** Titanium Nitride Coated  
 Male: **M** H-13 **H** Core: 42-48 HRC, Surface: 70 HRC **S** Black Nitride

**Inch Standard**

CATALOG NUMBER	T +.000 -.002	W +.0000 -.0004	A +.000 -.002	B +.000 -.002	C	D .0001/.0003 CLEARANCE PER SIDE	S1 ±.01	S2 ±.01	R POCKET RADIUS	Z	SHCS	
TL50X100	.500	1.000	.500	.375	.30	.375	.25	.68	.188	.03	M: #6-32 x 1/2	F: #6-32 x 5/8
TL62X125	.625	1.250	.625	.500	.41	.438	.31	.87	.250	.03	M: #6-32 x 5/8	F: #6-32 x 3/4
TL75X125	.750	1.250	.625	.500	.38	.438	.37	.87	.250	.04	M: #8-32 x 5/8	F: #8-32 x 3/4
TL87X150	.875	1.500	.875	.750	.57	.500	.43	1.00	.250	.04	M: #8-32 x 7/8	F: #8-32 x 1
TL100X150	1.000	1.500	.875	.375	.57	.500	.50	1.00	.250	.04	M: #10-32 x 1/2	F: #10-32 x 1
TL100X200	1.000	2.000	1.125	.750	.75	.750	.50	1.37	.375	.04	M: #10-32 x 7/8	F: #10-32 x 1-1/8
TL112X200	1.125	2.000	.875	.625	.50	.750	.56	1.37	.375	.04	M: 1/4-20 x 3/4	F: 1/4-20 x 1
TL112X300	1.125	3.000	1.500	.750	.87	1.125	.56	2.25	.500	.04	M: 1/4-20 x 7/8	F: 1/4-20 x 1-5/8
TL150X250	1.500	2.500	1.375	.625	.85	1.000	.75	1.75	.375	.04	M: 1/4-20 x 3/4	F: 1/4-20 x 1-1/2
TL175X300	1.750	3.000	1.250	.875	.75	1.125	.87	2.25	.500	.06	M: 5/16-18 x 1	F: 5/16-18 x 1-1/4
TL200X350	2.000	3.500	1.750	.750	1.07	1.500	1.00	2.50	.500	.06	M: 3/8-16 x 7/8	F: 3/8-16 x 2"

Screws included.

**Metric Standard**

CATALOG NUMBER	T +.00 -.05	W +.00 -.01	A +.00 -.05	B +.00 -.05	C	D .002/.008 CLEARANCE PER SIDE	S1 ±.25	S2 ±.25	R POCKET RADIUS	Z	SHCS	
TLM26X35	26	35	25	15	17	11	13	23	8	1	M: M5 x 16	F: M5 x 25
TLM30X45	30	45	25	15	17	15	15	30	8	1	M: M6 x 18	F: M6 x 25
TLM36X55	36	55	30	20	21.5	20	18	37.5	8	1	M: M8 x 22	F: M8 x 35
TLM36X75	36	75	35	20	26	30	18	52	8	1.5	M: M10 x 25	F: M10 x 35
TLM45X100	45	100	60	20	42	40	22.5	70	8	1.5	M: M10 x 25	F: M10 x 65

Screws included.

**ALTERNATIVE CONFIGURATIONS AVAILABLE**

- To order Top Locks with dual radii for mounting internally, specify the catalog number followed by "-R". Ex.TL112X300-R. As an option, refer to the standard Internal Locks shown on page C-12.
- To order Shuttle Mold sets or special male/female configurations, refer to page C-11.
- Made-to-order Top Locks can be quoted using the templates at procomps.com.

