

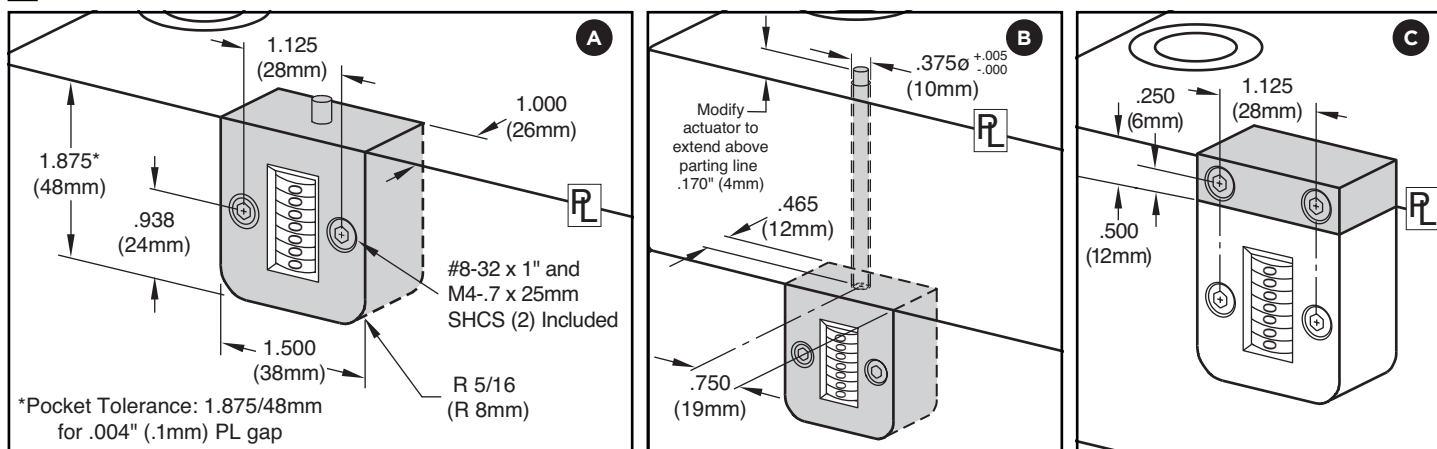
## COUNTERVIEW® S-SERIES



### APPLICATION GUIDELINES

- Maximum operating temperatures:
  - 250°F (120°C) Standard CounterView
  - 375°F (190°C) High Temp CounterView
- Counter: Non-resettable mechanical, 7-digit
- Available for installation on the movable or stationary halves and with extensions.
- For heat protection, refer to the Insulators available on pages F-10 and F-15.
- Cover Plates for protection are sold separately on page F-15.
- CounterViews can be ordered pre-set to a specific cycle count. Contact Customer Service for more information.

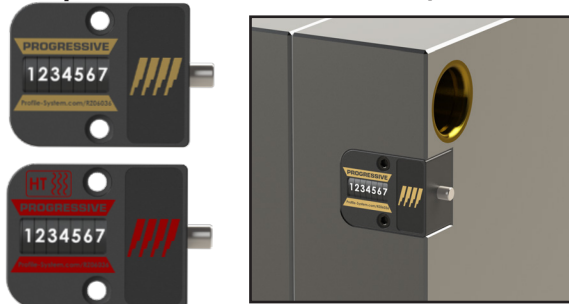
### M Glass-filled Nylon housing



### Mounting Options

<b>Parting Line Mount</b>	<b>A</b>	Parting line mount makes unit easily visible to operator.
<b>Internal Extension Mount</b>	<b>B</b>	Machinable 8" (200mm) included extension rod allows installation in support plate or rail. Not available for High Temp CounterViews.
<b>External Mount</b>	<b>C</b>	No pocket machining necessary. Designed specifically for retrofit applications. Order the Parting Line Mount and the CVE-EXT Block as shown below.

#### Operator Side: Movable Half / B Side



#### Operator Side: Stationary Half / A Side



CATALOG NUMBER	VERSION & MOUNTING STYLE
<b>CVPL-B</b>	Standard: Parting Line
<b>CVIN-B</b>	Standard: Internal Extension
<b>CVPLHT-B</b>	High Temp: Parting Line

Screws included.

CATALOG NUMBER	VERSION & MOUNTING STYLE
<b>CVPL-A</b>	Standard: Parting Line
<b>CVIN-A</b>	Standard: Internal Extension
<b>CVPLHT-A</b>	High Temp: Parting Line

Screws included.

### ACCESSORIES



CATALOG NUMBER	DESCRIPTION
<b>CVE-EXT</b>	External Mounting Block including #8-32 x 1" (2) and M4 x 25mm screws (2)
<b>CVID</b>	ID Plate for CounterView



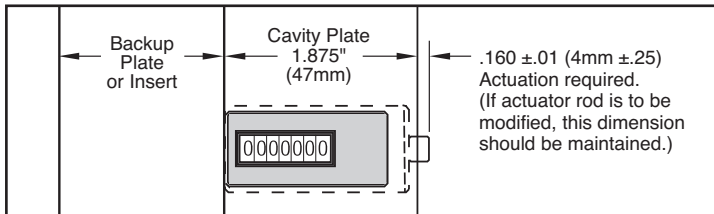
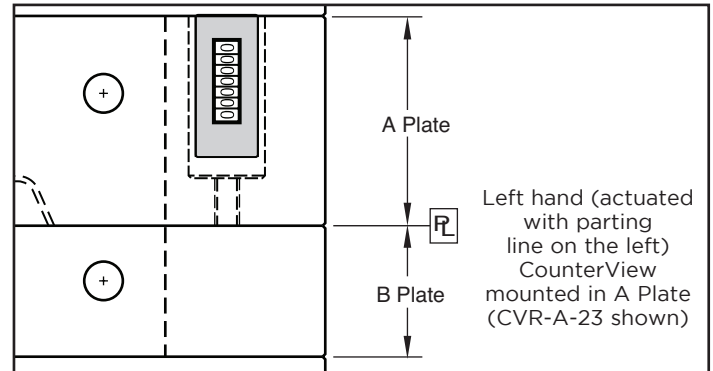
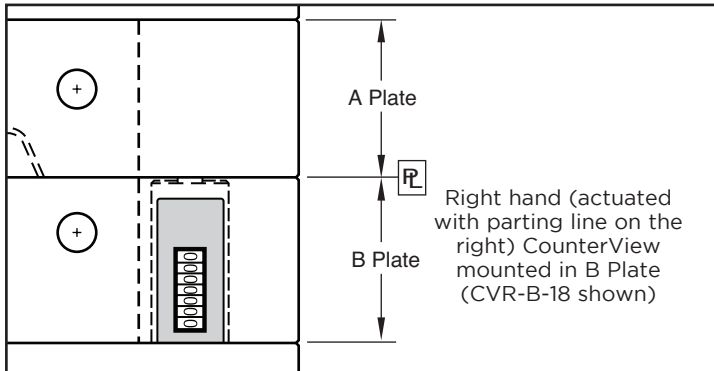
# COUNTERVIEW® R-SERIES

## APPLICATION GUIDELINES

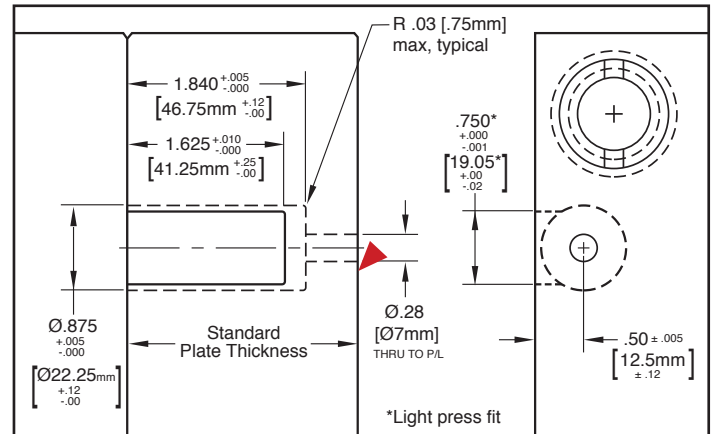
- Counter: Non-resettable mechanical, 7-digit
- Available for installation on the movable or stationary halves and with extensions.
- Maximum operating temperature is 250°F (120°C). For heat protection, refer to the Insulator available on page F-14.
- CounterViews can be ordered pre-set to a specific cycle count. Contact Customer Service for more information.



### M Glass-filled Nylon housing



The R-Series CounterView can be installed in the A or B plates with a minimum thickness of 1.875" (47mm). Larger plates utilize a threaded rod (included with each) that is pre-machined to the appropriate length for standard plate thicknesses to provide consistent actuation.



► CAD insertion point

### Operator Side: Movable Half / B Side



### Operator Side: Stationary Half / A Side



#### Inch Standard

CATALOG NUMBER	NOMINAL PLATE THICKNESS
CVR-B-18	1.875
CVR-B-23	2.375
CVR-B-28	2.875
CVR-B-33	3.375
CVR-B-38	3.875
CVR-B-43	4.375
CVR-B-83	8.375

#### Metric Standard

CATALOG NUMBER	NOMINAL PLATE THICKNESS
CVR-B-56	56
CVR-B-66	66
CVR-B-76	76
CVR-B-96	96
CVR-B-116	116
CVR-B-196	196

#### Inch Standard

CATALOG NUMBER	NOMINAL PLATE THICKNESS
CVR-A-18	1.875
CVR-A-23	2.375
CVR-A-28	2.875
CVR-A-33	3.375
CVR-A-38	3.875
CVR-A-43	4.375
CVR-A-83	8.375

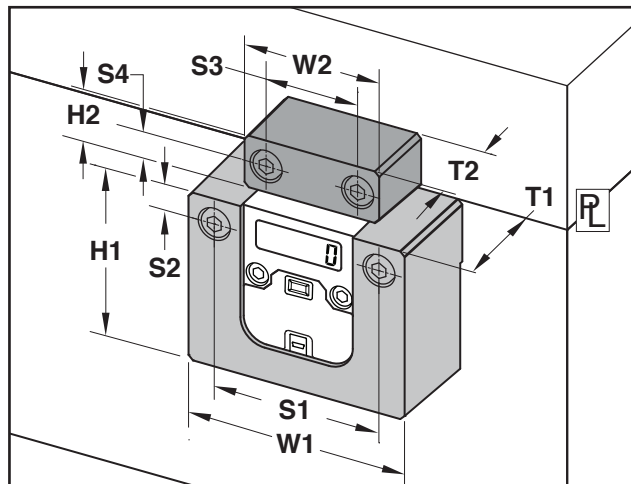
#### Metric Standard

CATALOG NUMBER	NOMINAL PLATE THICKNESS
CVR-A-56	56
CVR-A-66	66
CVR-A-76	76
CVR-A-96	96
CVR-A-116	116
CVR-A-196	196

Each R-Series CounterView includes the actuator. All except CVR-B-18 and CVR-A-18 require attachment of the actuator rod to the threaded CounterView unit.

# INSULATOR BLOCKS

## EXTERNAL MOUNT



### APPLICATION GUIDELINES

- Maximum temperature: 360°F (180°C).
- Installation can be on the cavity or core half of the tool. For use with ProFile, mount to the stationary half for optimum cable routing.
- The Insulator Block accepts the screws from the S-Series CounterView sold on page F-12 or the OnDemand Cve Monitor sold on page F-7. Can be utilized with the Real-Time and Access Cve Monitors sold on page F-2 and F-6, but they will protrude outside of the block.

### M Vdyne

CATALOG NUMBER	DESCRIPTION	HI	WI	TI	SI	S2	H2	W2	T2	S3	S4
<b>CV-BLK</b>	Inch version with screws: (2) 1/4-20 x 1-1/8 (Actuator) (2) 1/4-20 x 1-1/2 (Block)	2.37	3.00	1.37	2.25	.50	.75	2.00	1.00	1.00	.37
<b>CVMM-BLK</b>	Metric version with screws: (2) M6-1.0 x 30 (Actuator) (2) M6-1.0 x 40 (Block)	60	76	35	57	12.5	19	50	25	25.5	9.5

## R-SERIES COUNTERVIEW INSULATOR BLOCK

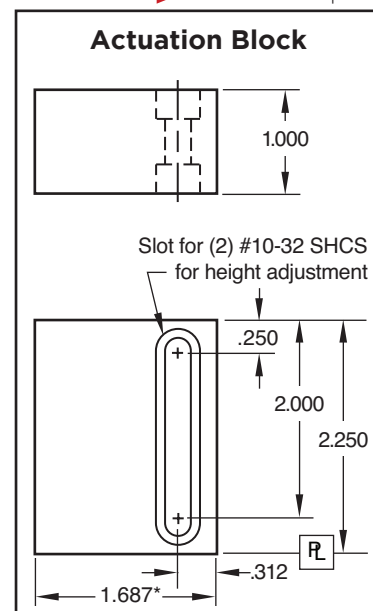
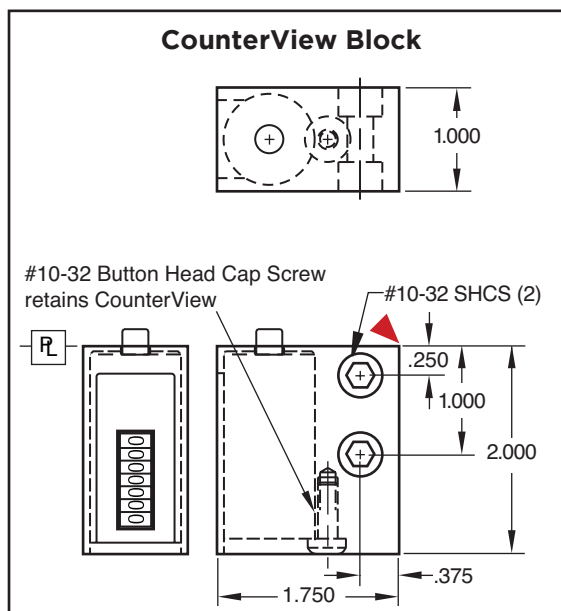
► CAD insertion point



### M A36 S Black Oxide

CATALOG NUMBER	DESCRIPTION
<b>CVRA-100</b>	CounterView Attachment Block Set (Includes Screws)

R-Series CounterViews are sold separately on page F-13.



Note: The width of the Actuation Block is smaller by 1/16" to allow for clearance if the CounterView Block is recessed into the mold.