



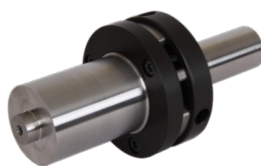
COLLAPSIBLE CORES EXPANDABLE CAVITIES

SECTION I



C-Cores: DT Series

Page: I-1



DT Core Grinding Fixtures

Page: I-2



DT Core Sub-10mm Series

Page: I-2



C-Cores: RT Series

Page: I-2



RT Core Grinding Rings

Page: I-2



Expandable Cavities

Page: I-3



COLLAPSIBLE CORES

DT SERIES

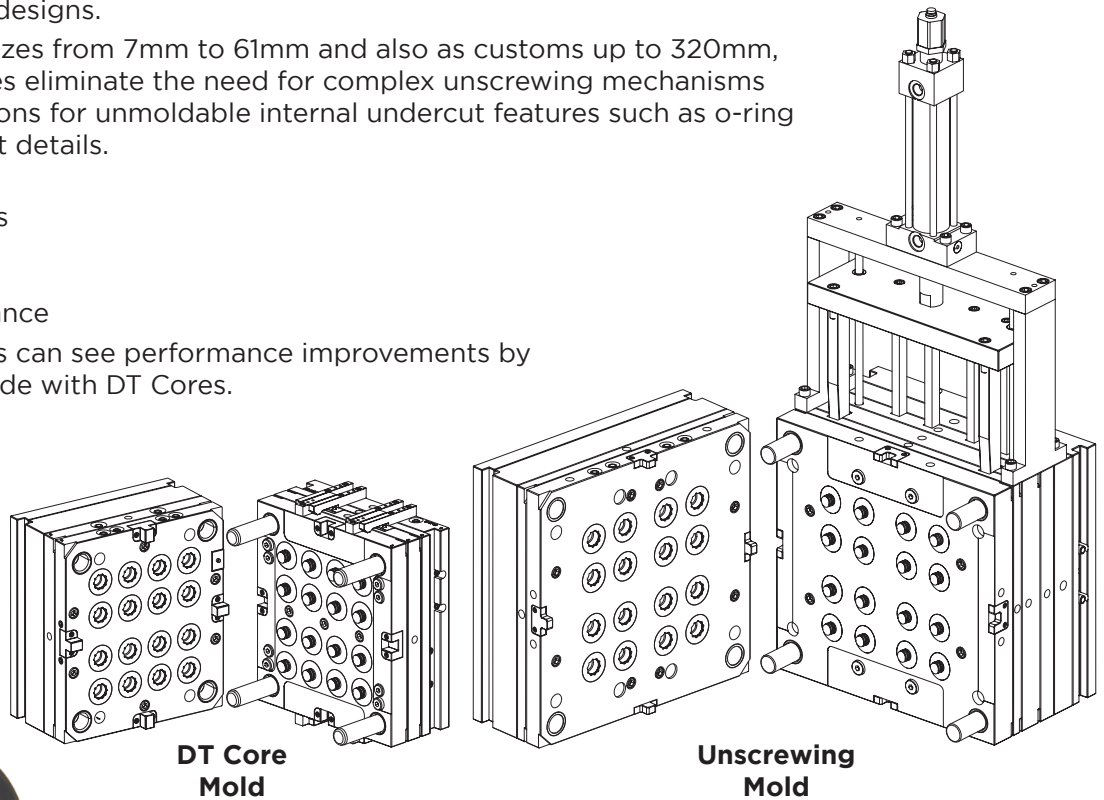
Roehr Tool Solutions offers several product options for molding and releasing threads. Dove Tail Collapsible Cores offer a more compact design and simplified mold approach over other tool designs.

Available in 24 standard sizes from 7mm to 61mm and also as customs up to 320mm, DT Series Collapsible Cores eliminate the need for complex unscrewing mechanisms as well as providing solutions for unmoldable internal undercut features such as o-ring grooves, slots, and snap fit details.

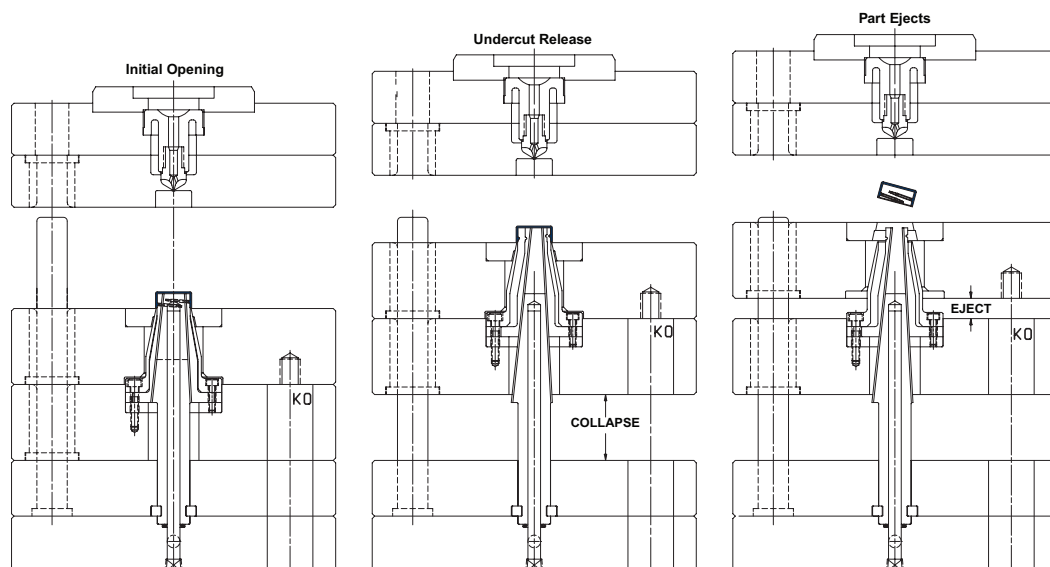
DT Cores allow for:

- Simplified, smaller molds
- Faster cycle times
- Improved part quality
- Reduced mold maintenance

Existing unscrewing molds can see performance improvements by retrofitting the movable side with DT Cores.



The DT Collapsible Core is a positive, mechanically actuated collapsible core that eliminates complex gear and rack approaches, resulting in a simpler mold and a faster cycle time.



DT Core molds are easily actuated with the machine knock outs.

COLLAPSIBLE CORES

SUB-10 DT CORE SERIES

The Sub-10mm DT Cores make it possible to release very small threads and undercuts in molded caps, connectors and small medical applications.

- Allows molding of parts with 7-10mm ID.
- Optional Quick Lock Plates enable core removal from parting line.
- Simpler alternative to unscrewing molds.
- Reduces cycle time and maintenance requirements.



RT SERIES

The RT Series Collapsible Cores are available in sizes to fit most inside detail applications. Whether molding threads or complex details, these cores can simplify design and production.

Made from premium tool steels and heat treated using proprietary heat treating methods.

Standard diameters range from 13mm to 105mm.



CORE GRINDING FIXTURES AND ACCESSORIES

Grinding Rings for Collapsible Cores securely hold the core segments in place against the center pin when grinding or EDM'ing details.

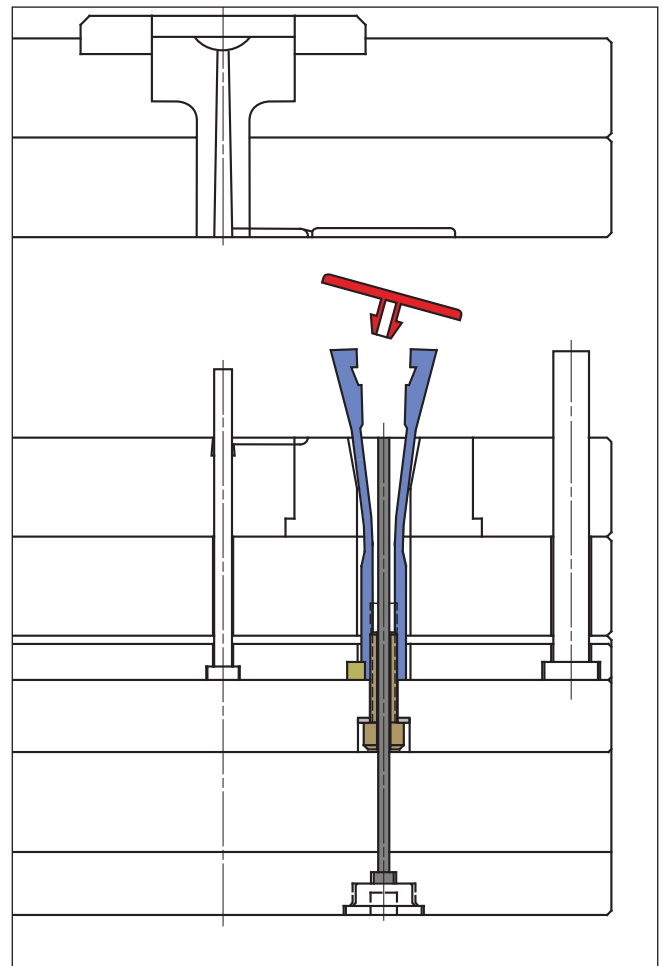
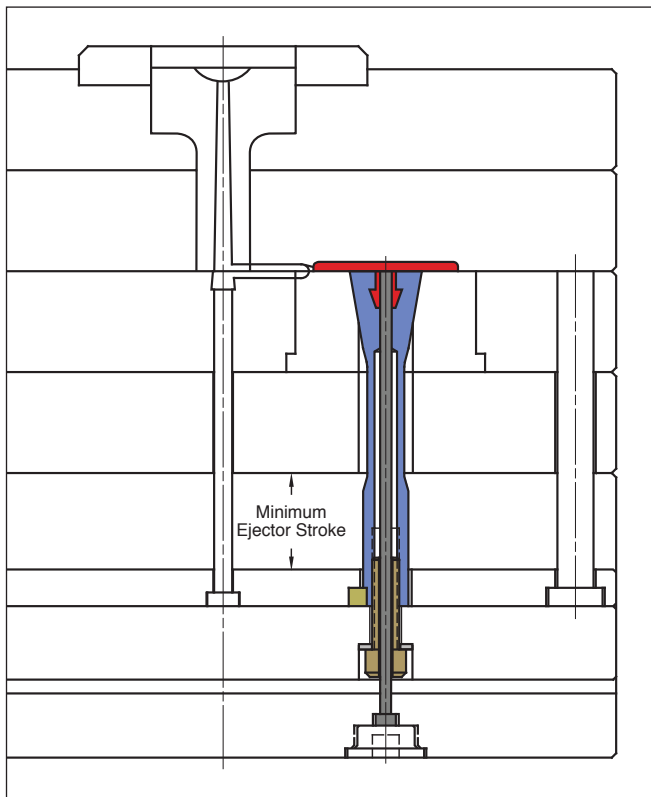




EXPANDABLE CAVITIES

EX-CAV[®] SYSTEM

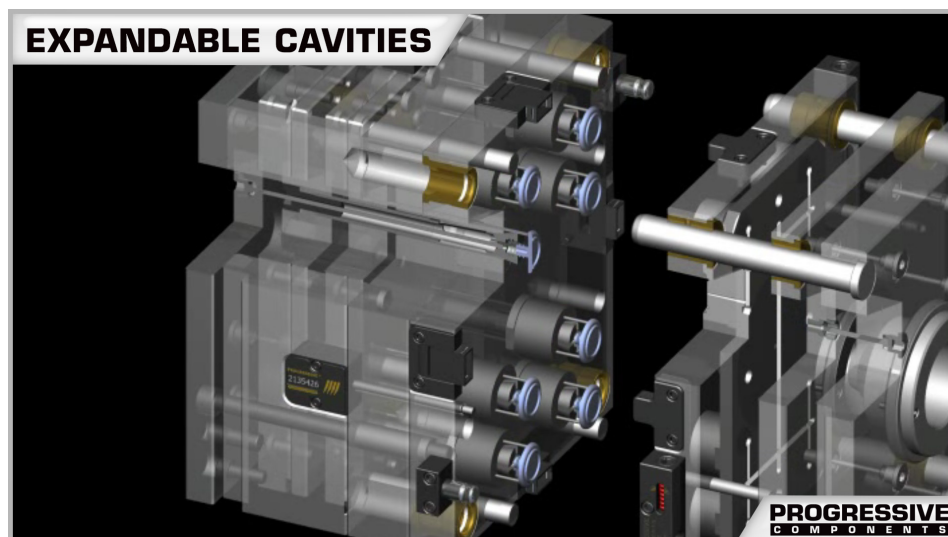
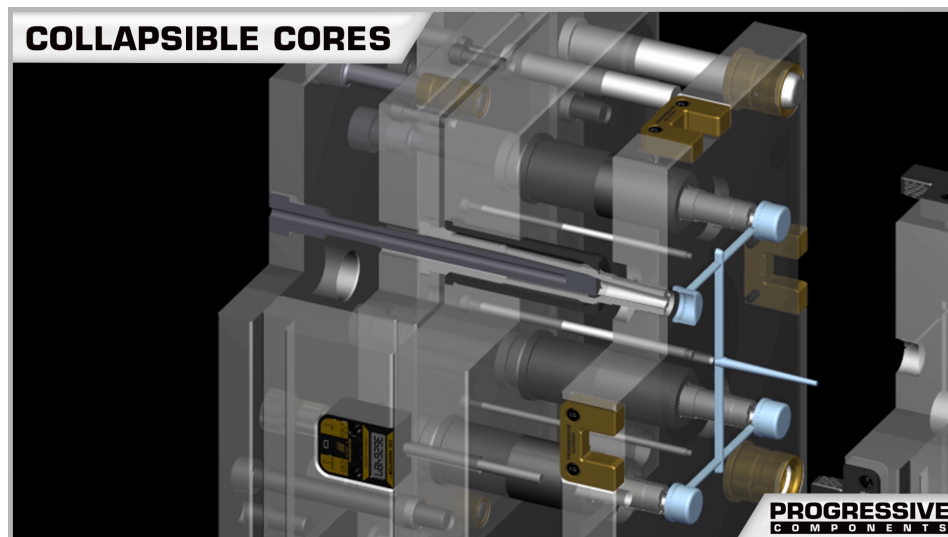
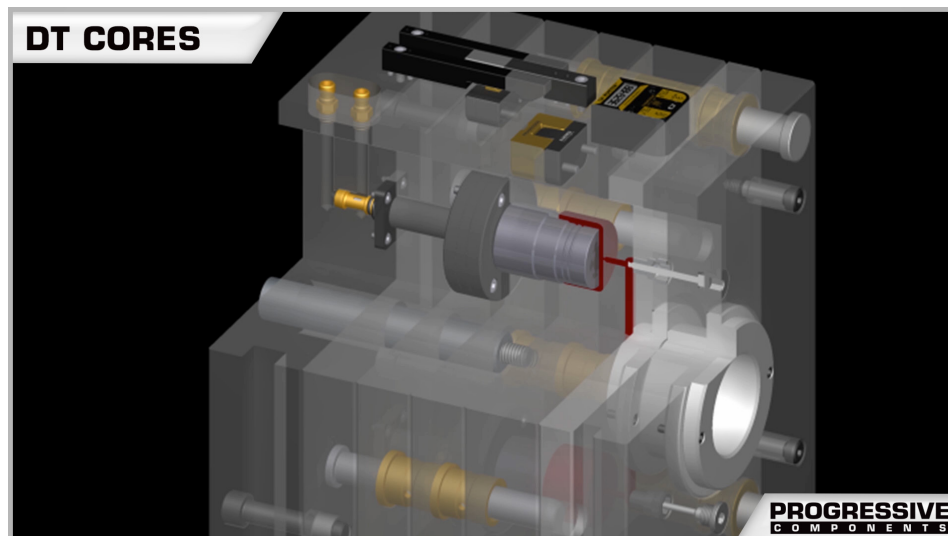
Expandable Cavities mold undercuts such as threads, dimples, and protrusion on the outside of molded parts. The patented Ex-Cav design eliminates the engineering, maintenance, and machining required for side action mechanisms which results in smaller molds or higher mold cavitation.



Contact Roehr Tool Solutions at information@RoehrTool.com for thread and undercut release solutions:

- Application Review/Quotations
- Engineering Services
- Prototyping & Product Development

ONLINE RESOURCES



When considering design options, numerous animations can be viewed at procomps.com and roehrtool.com.