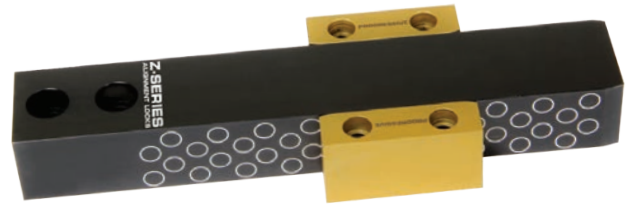


Z-SERIES™ BAR LOCK



Bar Locks enable designers to use off-the-shelf components for the alignment of large or multiple moving plate moulds.

Flachführungseinheiten ermöglichen es Konstrukteuren, diese für die Ausrichtung von großen oder mehreren beweglichen Platten zu verwenden.

Les centreurs Bar Locks permettent aux bureaux d'études d'utiliser des composants standard pour l'alignement des grands moules ou moules à plusieurs plaques mobiles.

Bar | Führungsschwert | Barre

M 1.2344 **H** Core: 42-48 HRC, Surface: 70 HRC **S** Salt Bath Nitride

CATALOGUE NUMBER	T +0.00 -.005	L ±.005	W +0.000 -.0005	E REF	P MIN	S1 ±.005	S2 ±.005	S3 +0.0 -.01	SHCS
BLB100L6	1.000	6.00	1.000	.22	1.38	.50	.38	.69	5/16-18 x 1.25
BLB125L9	1.250	8.88	1.500	.28	1.88	.75	.50	1.00	3/8 - 16 x 1.50
BLB137L11	1.375	10.88	2.000	.31	2.38	1.00	.50	1.38	3/8 - 16 x 1.50
BLB150L16	1.500	15.88	3.000	.31	3.38	1.5	.63	2.00	1/2 - 13 x 1.75

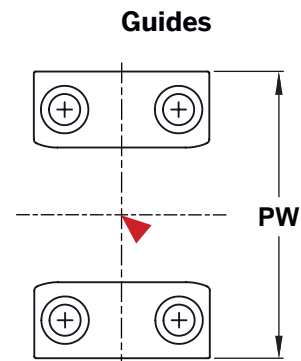
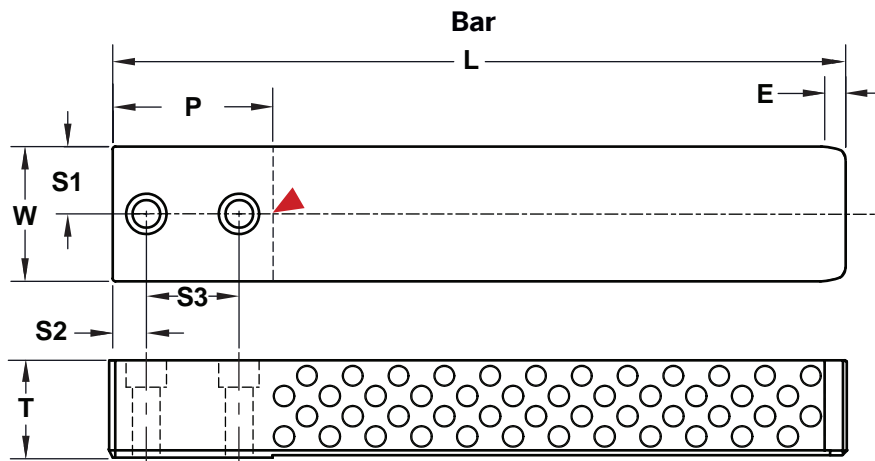
Note: Sold individually. Each catalogue number includes (1) Bar Lock and (2) Screws.

Hinweis: Einzeln erhältlich. Jede Katalognummer beinhaltet (1) Stabverriegelung und (2) Schrauben.

Remarque: Vendu individuellement. Chaque numéro de catalogue comprend (1) serrure à barres et (2) vis.

▶ CAD insertion point | CAD Einfügemarke | CAD point d'insertion

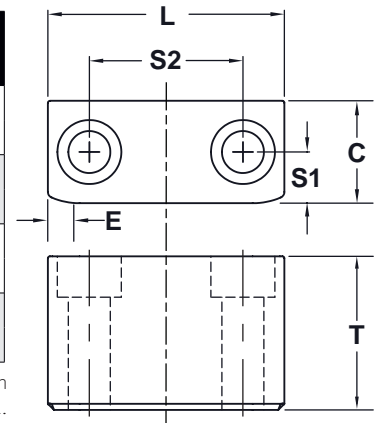
For custom Bar Locks, refer to the templates in section X.
Kundenspezifische Flachführungseinheiten finden Sie in den Vorlagen unter Abschnitt X.
Pour les centreurs personnalisés, référez-vous aux modèles de la section X.



Guides | Führungen | Guides

M 1.2379 **H** Core: 58-62 HRC, Surface: 80 HRC **S** Titanium Nitride Coated

CATALOGUE NUMBER	T +0.00 -.005	L +0.00 -.005	C +0.000 -.0003	PW +0.003 +.0006	E REF	S1 ±.005	S2 ±.005	SHCS	USE WITH
BLG100L1.3	1.000	1.310	.500	2.000	.22	.250	.750	#10-32 x 1.25	BLB100L6
BLG100L1.8		1.810					1.125		
BLG125L1.3	1.250	1.310	.625	2.750	.28	.310	.750	1/4-20 x 1.50	BLB125L9
BLG125L2.3		2.310					1.25		
BLG137L1.8	1.375	1.810	.750	3.500	.31	.375	1.125	5/16-18 x 1.50	BLB137L11
BLG137L3.3		3.310					2.250		
BLG150L2.3	1.500	2.310	1.000	5.000	.31	.500	1.500	3/8-16 x 1.75	BLB150L16
BLG150L3.8		3.810					2.500		



▶ CAD insertion point | CAD Einfügemarke | CAD point d'insertion

Note: Guides are sold in pairs. Each catalogue number includes (2) guides and (4) screws.
Note: 260° C max operating temperature.

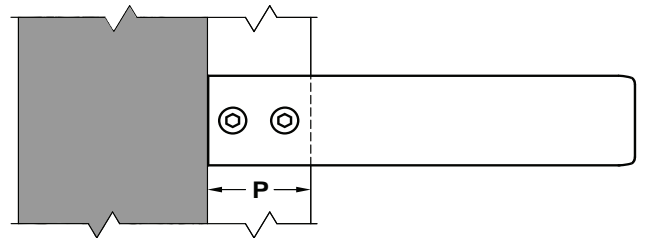
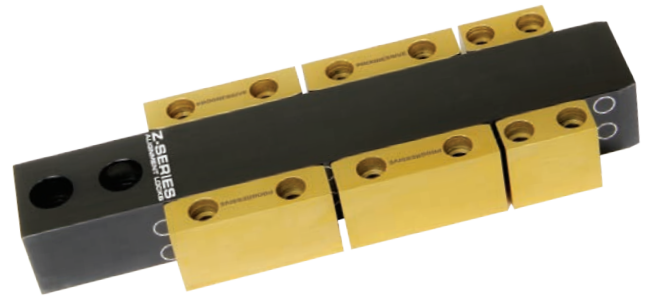
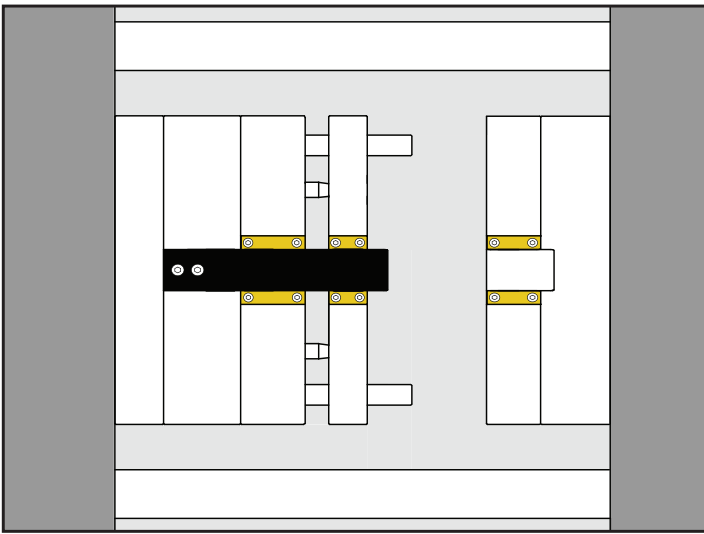
Hinweis: Führungen werden paarweise verkauft. Jede Katalognummer beinhaltet (2) Führungen und (4) Schrauben.
Hinweis: Maximale Betriebstemperatur bei 260° C

Remarque: Les guides sont vendus par paires. Chaque numéro de catalogue comprend (2) guides et (4) vis.
Remarque: Température maximale de fonctionnement de 260° C.

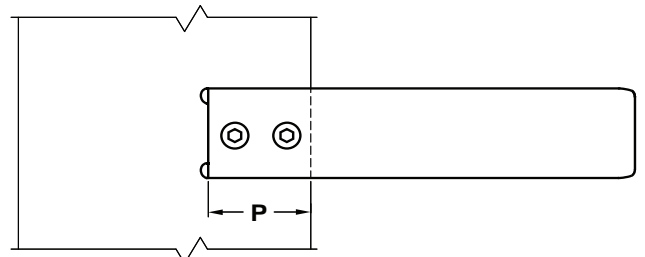
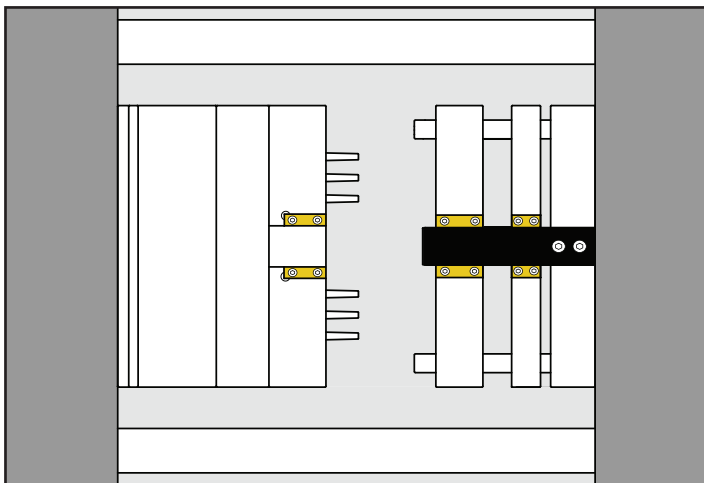


BAR LOCK APPLICATIONS

Stripper Plate | Abstreifplatten | Plaque D v tisseuse

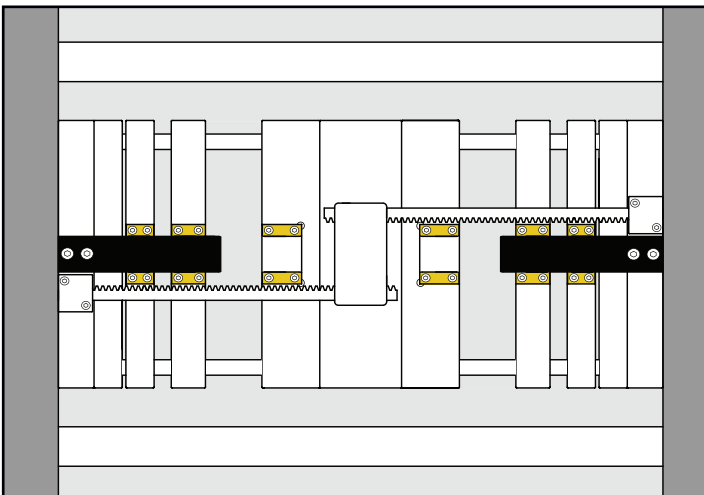


Three Plate | Dreiplattenwerkzeuge | Trois Plaques

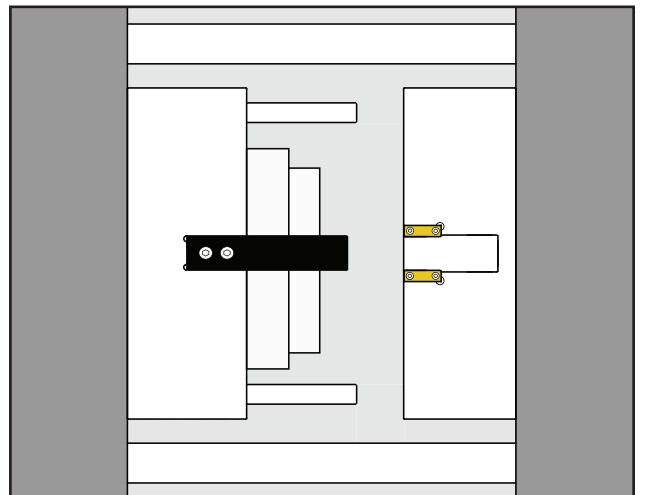


MINIMUM POCKET LENGTH = P

Stack Mould | Etagenwerkzeuge | Moule    tage



Large Mould | Gro werkzeuge | Moule Grande Taille



SIDE/TOP/GUIDE LOCK SELECTION GUIDE

Refer to the chart below to match the correct alignment lock for the corresponding mould size and weight of B-Side and press platen, using four locks per mould. Clean and lubricate lock every 100,000 cycles, and prevent corrosion during mould storage.

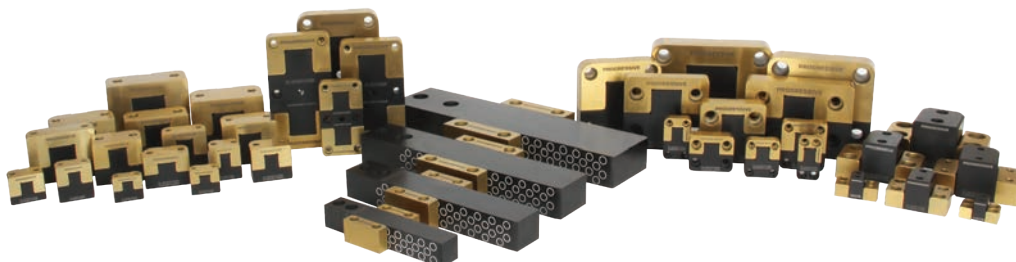
Beziehen Sie sich auf die nachfolgende Tabelle, um die passende Feinzentrierung für die entsprechende Werkzeuggröße und das Gewicht der beweglichen-Seite sowie der Maschinenaufspannplatte auszuwählen, wobei vier Zentrierungen pro Werkzeug verwendet werden. Reinigen und Schmierer Sie alle 100.000 Zyklen und vermeiden Sie Korrosion bei der Wiedereinlagerung des Werkzeugs

Des plaques de pression sont utilisées avec quatre centreurs par moule. Nettoyer et lubrifier tous les 100 000 cycles et empêcher la corrosion lors du stockage du moule.

RECOMMENDED MAX MOULD SIZE (LXWXH)	METRIC SIDE LOCKS	SIDE LOCKS	GUIDE LOCKS	TOP LOCKS	TOTAL MAX WEIGHT MOVING HALF + PRESS PLATEN (KG/LBS)
RTI AND MOULDS 196 X 196 X 200 AND SMALLER	SLM16X50, SLP16X20 SLPM16X40, SLP20X25 SLPM20X50, SLMS13X38 SLMS16X50	SL37X100, SL50X125 SL50X150, SL50X200 SLS62X150, SLS62X200 SLR50X125, SLR50X150	GL100X150 GLM25X45	TL50X100, TL62X125 TL75X125, TLM26X35 TLR87X150	900 / 2,000
246 X 396 X 400	SLM16X50, SLMS19X75 SLPM25X32, SLP25X63 SLPM32X40, SLP32X80 SLPM40X50 SLPM40X100 SLMS19X100	SL50X125, SL50X150 SL50X200, SLS62X150 SLS62X200, SLS75X300 SLS75X400, SLR50X150 SLR50X200	GL100X150 GL150X250 GLM25X45	TL62X125, TL75X125 TLM26X35 TLR87X150 TLR112X200	2,300 / 5,000
396 X 596 X 400	SLM19X75, SLM19X100 SLMS25X125 SLPM50X56 SLPM50X112	SL50X150, SL50X200 SL75X300, SLS112X500 SLS75X300, SLS75X400 SLR75X300, SLR100X400	GL150X250 GLM40X65	TL75X125, TL87X150 TLM26X35, TLM30X45 TLR112X200 TLR150X250	3,200 / 7,000
696 X 796 X 600	SLM19X75, SLM19X100	SL75X300, SLS112X500	GL200X350 GL150X250 GLM40X65	TL100X150, TL100X200 TL112X200, TL112X300 TLM26X35, TLM30X45	4,500 / 10,000
796 X 996 X 700	SLM25X125	SL100X400	GL200X350 GLM40X65	TL112X200, TL112X300 TLM36X55, TLM36X75	6,800 / 15,000
1000 X 1200 X 850		SL125X500	GL250X450 GLM50X90	TL150X250, TL175X300 TLM36X55, TLM36X75	9,000 / 20,000
1200 X 1300 X 950		SL150X600	GL250X450	TL175X300, TL200X350 TLM45X100	11,800 / 26,000

BAR LOCK SELECTION GUIDE

BAR CATALOGUE NUMBER	GUIDE CATALOGUE NUMBER	BAR LOCK ENGAGEMENT	TOTAL MAX KG (LBS) SUPPORTED
BLB100L6	BLG100L1.3, BLG100L1.8	4.50	15,000
BLB125L9	BLG125L1.3, BLG125L2.3	7.00	20,000
BLB137L11	BLG137L1.8, BLG137L3.3	8.50	23,000
BLB150L16	BLG150L2.3, BLG150L3.8	12.50	26,000
BLN150L8	BLG150L2.3, BLG150L3.8	3.75	25,000
BLN250L10	BLG250L4.3	5.00	50,000
BLN350L13	BLG350L4.8	6.00	75,000



BAR LOCKS

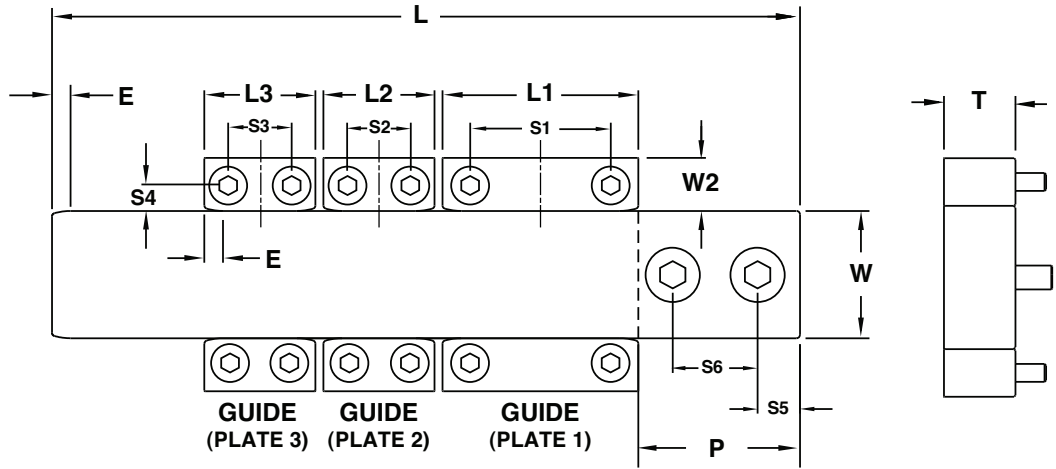
Z-Series™

Male Insert

Material = 1.2344 (H-13)
 Core = 42-48 HRC
 Surface = 70 HRC
 Treatment = Salt Bath Nitride

Female Insert

Material = 1.2379 (D-2)
 Core = 58-62 HRC
 Surface = 80 HRC
 Treatment = Titanium Nitride Coated



Quantity

BAR						
L	T	W	S5	S6	E REF	P
<input type="text"/>	<input type="text"/>	<input type="text"/>	<input type="text"/>	<input type="text"/>	<input type="text"/>	<input type="text"/>

STANDARD TOLERANCES		
L-L3	+0.000 -0.005	+0.00 -0.15
T	+0.000 -0.005	+0.00 -0.15
W-W2	+0.0000 -0.0003	+0.000 -0.007
S1-S6	±0.005	±0.1
	INCH	METRIC

GUIDE 1

L1	T	W2	S1	S4
<input type="text"/>	<input type="text"/>	<input type="text"/>	<input type="text"/>	<input type="text"/>

Note: The "T" dimension will be equal for male and all guides.

Progressive will determine the lead-in radius, SHCS size, and center spacing.

GUIDE 2

L2	T	W2	S2	S4
<input type="text"/>	<input type="text"/>	<input type="text"/>	<input type="text"/>	<input type="text"/>

Bars sold individually. Guides sold in pairs.

SHCS not included for non-standard T Dimensions.

GUIDE3

L3	T	W2	S3	S4
<input type="text"/>	<input type="text"/>	<input type="text"/>	<input type="text"/>	<input type="text"/>

E-MAIL TECH@PROCOMPS.COM

CONTACT:	COMPANY NAME:	PHONE #:
REFERENCE #:	ACCOUNT #:	E-MAIL ADDRESS:

BAR LOCKS

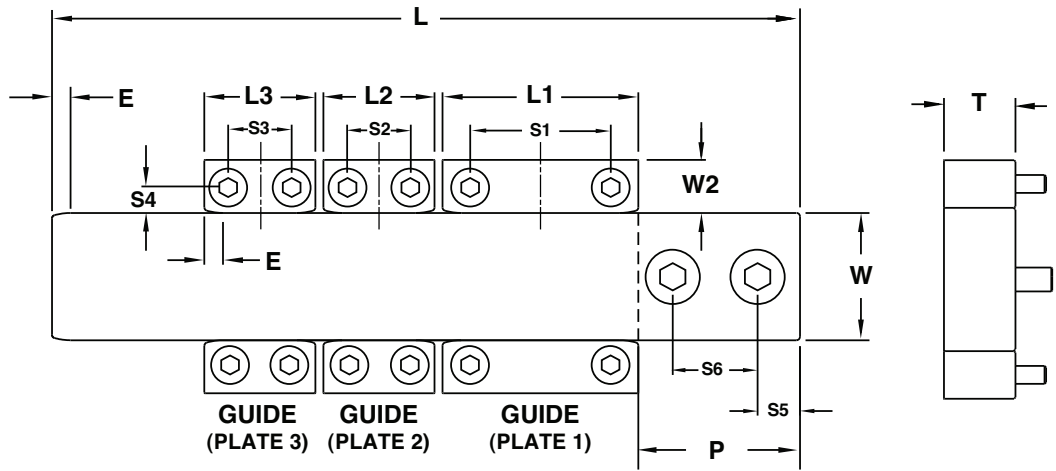
Z-Series™

Male Insert

Material = 1.2344 (H-13)
 Core = 42-48 HRC
 Surface = 70 HRC
 Treatment = Salt Bath Nitride

Female Insert

Material = 1.2379 (D-2)
 Core = 58-62 HRC
 Surface = 80 HRC
 Treatment = Titanium Nitride Coated



Quantity

BAR						
L	T	W	S5	S6	E REF	P
<input type="text"/>	<input type="text"/>	<input type="text"/>	<input type="text"/>	<input type="text"/>	<input type="text"/>	<input type="text"/>

STANDARD TOLERANCES		
L-L3	+0.000 -0.005	+0.00 -0.15
T	+0.000 -0.005	+0.00 -0.15
W-W2	+0.0000 -0.0003	+0.000 -0.007
S1-S6	±0.005	±0.1
	INCH	METRIC

GUIDE 1

L1	T	W2	S1	S4
<input type="text"/>	<input type="text"/>	<input type="text"/>	<input type="text"/>	<input type="text"/>

Note: The "T" dimension will be equal for male and all guides.

Progressive will determine the lead-in radius, SHCS size, and center spacing.

GUIDE 2

L2	T	W2	S2	S4
<input type="text"/>	<input type="text"/>	<input type="text"/>	<input type="text"/>	<input type="text"/>

Bars sold individually. Guides sold in pairs.

SHCS not included for non-standard T Dimensions.

GUIDE3

L3	T	W2	S3	S4
<input type="text"/>	<input type="text"/>	<input type="text"/>	<input type="text"/>	<input type="text"/>

E-MAIL TECH@PROCOMPS.COM

CONTACT:	COMPANY NAME:	PHONE #:
REFERENCE #:	ACCOUNT #:	E-MAIL ADDRESS: