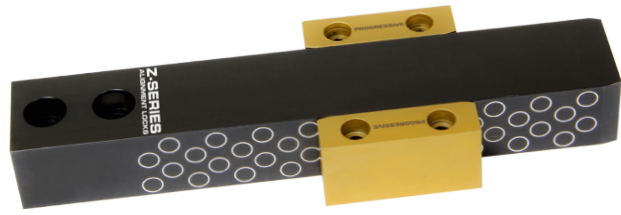


BAR LOCKS

Z-SERIES



Progressive's Bar Locks enable mould designers to select off-the-shelf components for alignment of large moulds and moulds with multiple moving plates.

Long-term precision alignment of plates is achieved through Progressive's Z-Series proprietary treatments, engagement ramp geometry and particle rings on the guiding surfaces.

Non-drying, non-hardening food grade grease is applied to all areas, including the particle rings. For production, install the locks and wipe down the outside of the Bar Locks only; maintain the grease on the mating surfaces and within the rings.

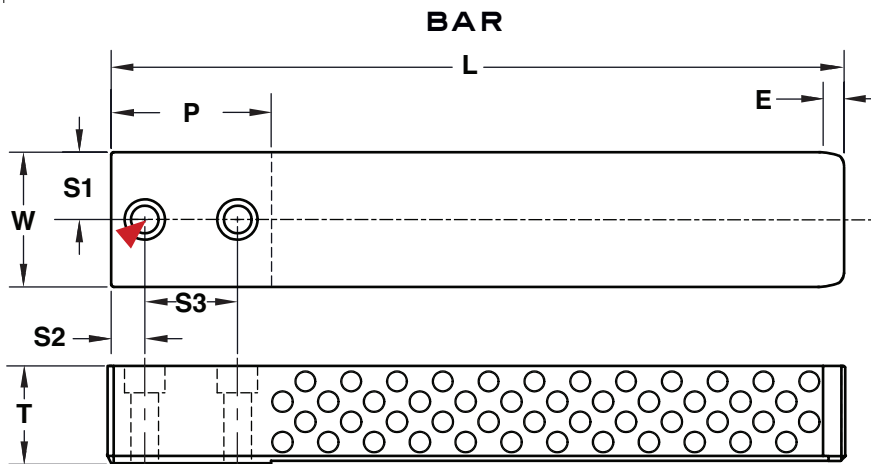
BAR

M H-13 **H** Core: 42-48 HRC, Surface: 70 HRC **S** Salt Bath Nitride

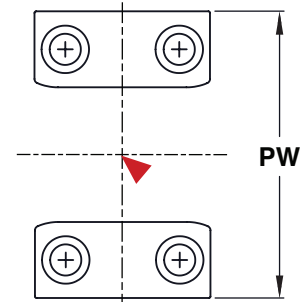
CATALOG NUMBER	T +.000 -.005	L ±.005	W +.0000 -.0003	E REF	P MIN	S1 ±.005	S2 ±.005	S3 +.00 -.01	SHCS
BLB100L6	1.000	6.00	1.000	.22	1.38	.50	.38	.69	5/16-18 x 1.25
BLB125L9	1.250	8.88	1.500	.28	1.88	.75	.50	1.00	3/8 - 16 x 1.50
BLB137L11	1.375	10.88	2.000	.31	2.38	1.00	.50	1.38	3/8 - 16 x 1.50
BLB150L16	1.500	15.88	3.000	.31	3.38	1.5	.63	2.00	1/2 - 13 x 1.75

Note: Sold individually. Each catalog number includes (1) Bar Lock and (2) Screws. ▶ CAD insertion point

x For custom Bar Locks, refer to the templates in section X.



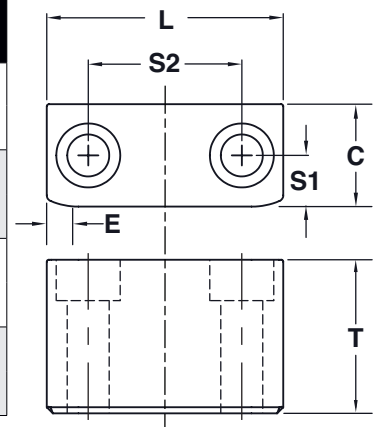
GUIDES



GUIDES

M D-2 **H** Core: 58-62 HRC, Surface: 80 HRC **S** Titanium Nitride Coated

CATALOG NUMBER	T +.000 -.005	L +.000 -.005	C +.0000 -.0003	PW +.0003 +.0006	E REF	S1 ±.005	S2 ±.005	SHCS	USE WITH
BLG100L1.3	1.000	1.310	.500	2.000	.22	.250	.750	#10-32 x 1.25	BLB100L6
BLG100L1.8		1.810					1.125		
BLG125L1.3	1.250	1.310	.625	2.750	.28	.310	.750	1/4-20 x 1.50	BLB125L9
BLG125L2.3		2.310					1.25		
BLG137L1.8	1.375	1.810	.750	3.500	.31	.375	1.125	5/16-18 x 1.50	BLB137L11
BLG137L3.3		3.310					2.250		
BLG150L2.3	1.500	2.310	1.000	5.000	.31	.500	1.500	3/8-16 x 1.75	BLB150L16
BLG150L3.8		3.810					2.500		



Note: Guides are sold in pairs. Each catalog number includes (2) guides and (4) screws. ▶ CAD insertion point

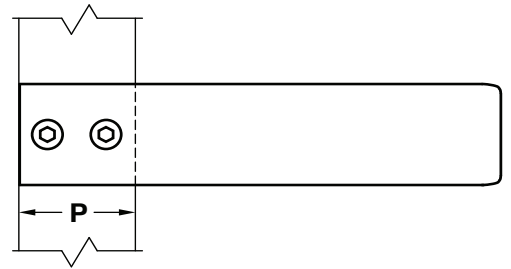
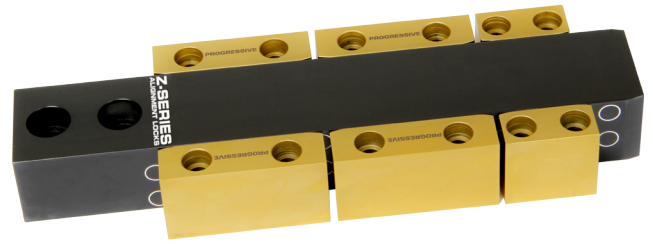
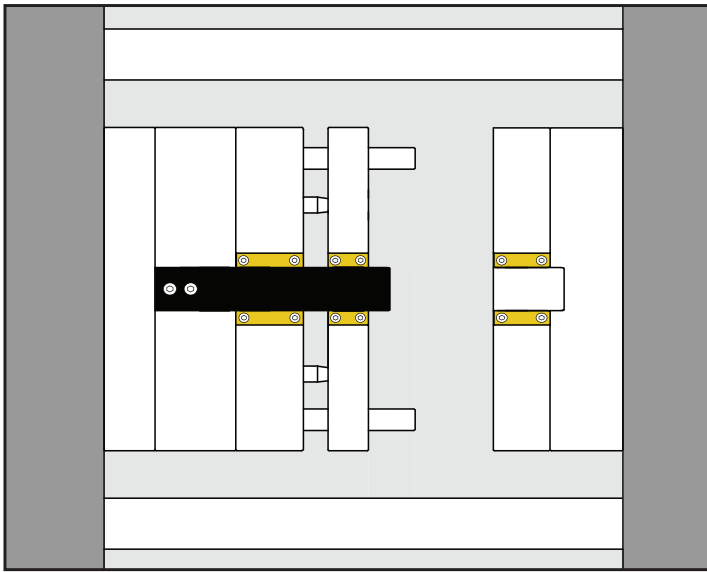
x For custom Guides, refer to the templates in section X.

GUIDES

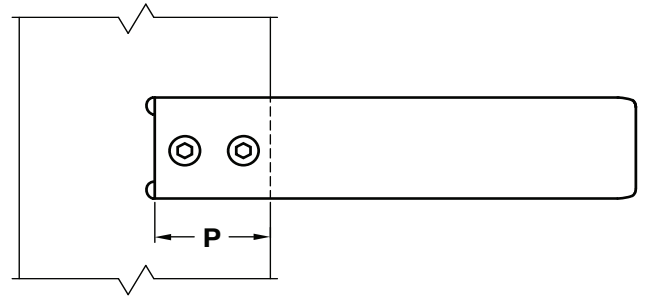
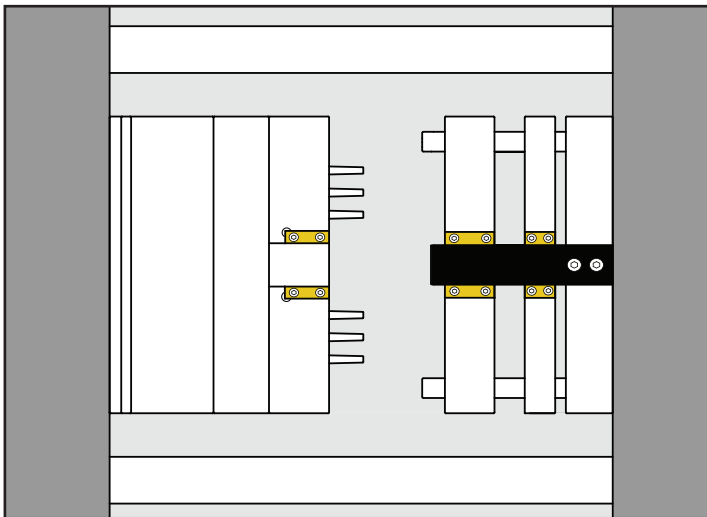


BAR LOCKS APPLICATIONS

Stripper Plate Application

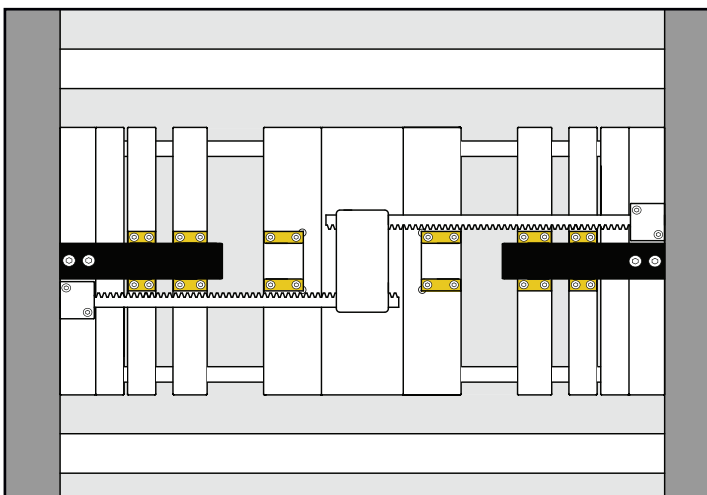


Three Plate Application



MINIMUM POCKET LENGTH = P

Stack Mould Application



Large Mould Application

