

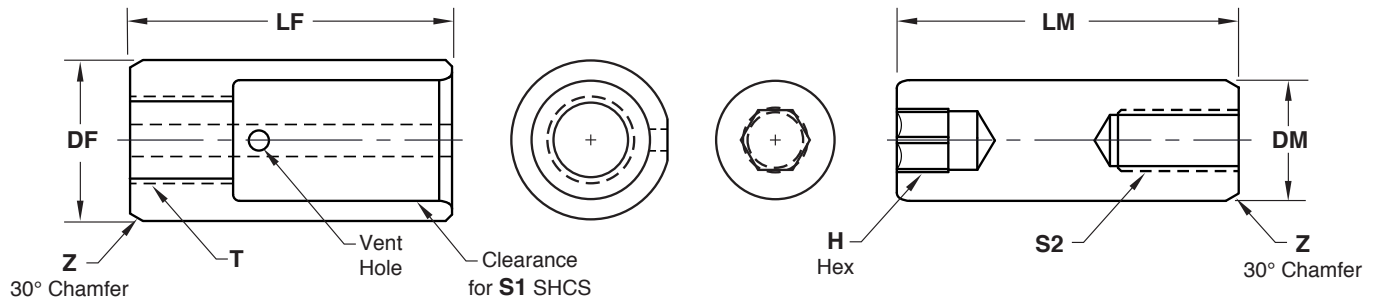


CAVITY INTERLOCKS

ROUND

Round Cavity Interlocks are offered in small diameters to enable mounting within a mold's inserts. The design features the maximum amount of straight alignment engagement for the minimum amount of pocket depth required.

- Can be mounted from parting line or bolted from the back of the inserts.
- Vent hole and flat provided on female insert.



Female: **M** H-13 **H** Core: 42-48 HRC, Surface: 70 HRC **S** Salt Bath Nitride

Male: **M** DC53 **H** Core: 58-62 HRC, Surface: 80 HRC **S** Titanium Nitride Coated

Inch Standard

CATALOG NUMBER	DM -.0001 -.0002	DF +.0000 -.0002	LF +.000 -.002	LM +.000 -.002	PM	E	Z	S1 SHCS Size	T Thread	S2 Set Screw Size	H
CRS250	.2500	.3750	.687	.812	.500	.23	.03	#6-32 x 3/8"	#10-32	#6-32 x 1/2	1/8
CRS375	.3750	.5000	1.000	1.062	.625	.36	.04	#10-32 x 5/8"	1/4-20	#10-32 x 5/8	3/16
CRS500	.5000	.6250	1.375	1.375	.750	.51	.04	1/4-20 x 7/8"	5/16-18	1/4-20 x 3/4	3/16

Note: 500°F max operating temperature.

Socket Head Cap Screw & Set Screw included.

Female: **M** H-13 **H** Core: 42-48 HRC, Surface: 70 HRC **S** Salt Bath Nitride

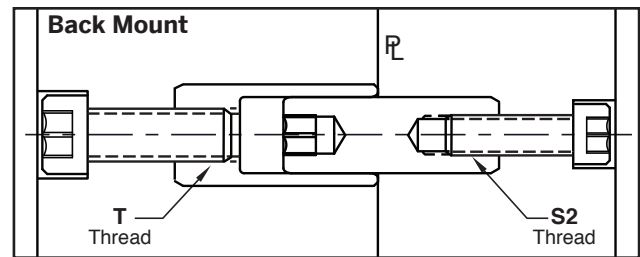
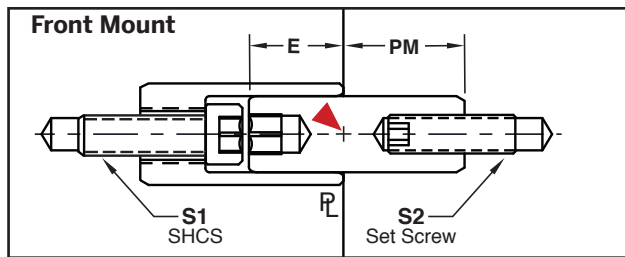
Male: **M** DC53 **H** Core: 58-62 HRC, Surface: 80 HRC **S** Titanium Nitride Coated

Metric Standard

CATALOG NUMBER	DM -.002 -.006	DF +.000 -.005	LF +.0 -.1	LM +.0 -.1	PM	E	Z	S1 SHCS Size	T Thread	S2 Set Screw Size	H
CRSM06	6	8	16	18	10	6	.3	M3-0.5 x 8	M4-0.7	M4-0.7 x 12	3
CRSM08	8	12	20	24	14	8	.3	M4-0.7 x 10	M5-0.8	M5-0.8 x 16	4
CRSM10	10	14	22	26	14	10	.3	M4-0.7 x 10	M5-0.8	M6-1.0 x 16	5
CRSM12	12	16	30	32	17	13	.5	M6-1.0 x 16	M8-1.25	M6-1.0 x 16	5

Note: 260°C max operating temperature.

Socket Head Cap Screw & Set Screw included.



▶ CAD insertion point

Installation Guidelines:

- Diameter (DF & DM) Machining Tolerances: Inch: +.0002" / Metric: +.005mm
- Maximum chamfer size should be .02" / .5mm on counterbore.
- Maximum clearance between female and male insert is .0006" / .015mm total.
- The fasteners provided are for parting line installation shown in the graphic above left. For bolting in back, the mold maker will select fasteners to accommodate insert thickness.

Alternative Configurations:

- To order Shuttle Mold sets or special male/female configurations, refer to page C-11.