



i-mold
MOLDING INNOVATIONS

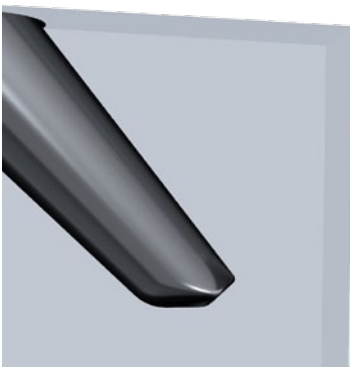
Spitztunnel zur seitlichen Anspritzung
Sub-gate for side-gating
Tunnel di iniezione standard per iniezione laterale

→ **TPS**

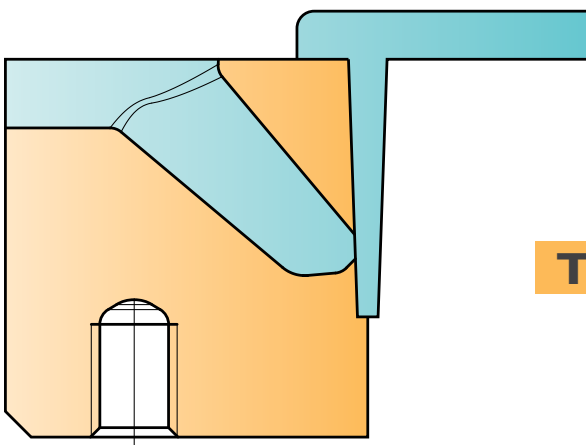


TPS

seitliche Anspritzung
side gating
iniezione laterale




- DE** > **standardisierter Spitztunnel zur seitlichen Anspritzung**
> **integrierter Stauboden reduziert Druckverlust und Scherung**
> **hoch verschleißfester Warmarbeitsstahl M2 (1.3343) – 54+2 HRC**
- EN** > straight standard sub-gate for side-gating
> integrated dead-end recess reduces loss of pressure and shear stress.
> highly wear-resistant hot working steel M2 (1.3343) – 54+2 HRC
- IT** > tunnel di iniezione standard per iniezione laterale
> il fondo di ritenzione integrato riduce la perdita di pressione e l'attrito
> acciaio per lavorazioni a caldo particolarmente resistente all'usura
M2 (1.3343) – 54+2 HRC

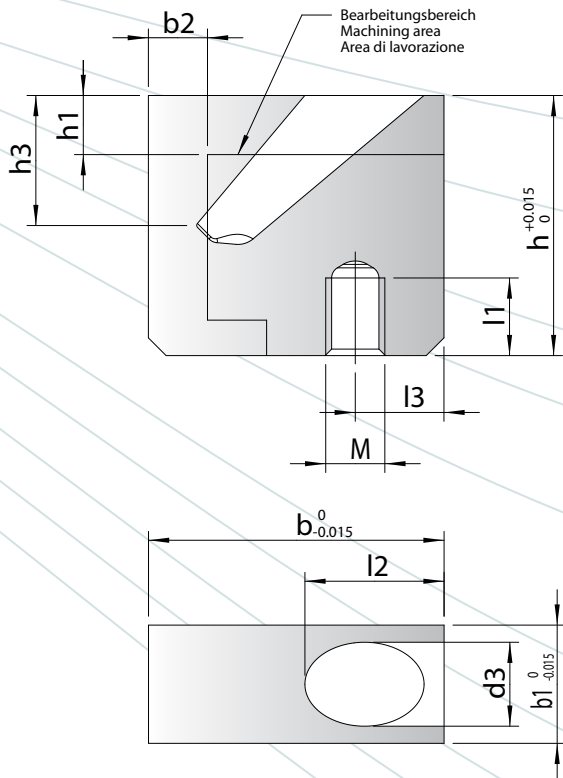


TPS



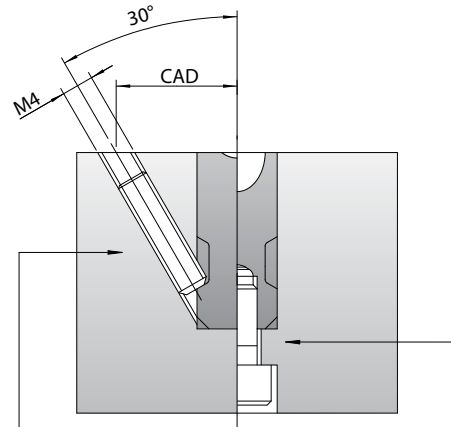
	TPS-S	TPS-1	TPS-2	TPS-3
 Ansnitt / gate point / punto d'iniezione	0,4 - 0,8	0,8 - 1,8	0,8 - 2,8	1,1 - 4,5
max. Schussgewichte (g) · max. shotweight (g) · pesi d'iniezione max. (g)				
NV	30	120	600	1800
MV	20	75	350	1000
HV	12	50	175	600

NV = niedrige Viskosität / low viscosity / bassa viscosità
 MV = mittlere Viskosität / medium viscosity / media viscosità
 HV = hohe Viskosität / high viscosity / elevata viscosità



TPS

Befestigungsmöglichkeiten
 Mounting possibilities
 Possibilità di fissaggio



Befestigung über Madenschraube M4
 Fixed with headless screw M4
 Fissaggio mediante vite senza testa M4

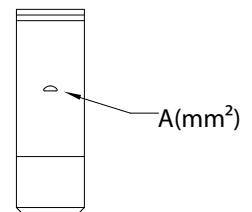
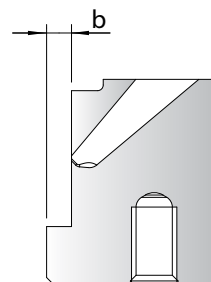
Befestigung über Zylinderschraube M4
 Fixed with hexagon screw M4
 Fissaggio mediante vite a testa cilindrica M4

Typ	b	b1	b2 max.	d3	h	h1 max.	h3	l1	l2	l3	M
TPS-S	15	6	2.4	4	18	4	~7	6	7.1	5.5	4
TPS-1	18	8	2.6	6	22	5	~9	6	8.4	6	4
TPS-2	25	10	5	8	22	6	~11	6	11.8	7.5	5
TPS-3	30	12	6.5	10	27	7	~13	6	14.1	8	5

➔ Beispiel Bestellbezeichnung · Example of order specification · Esempio codice di ordinazione: **TPS-1**

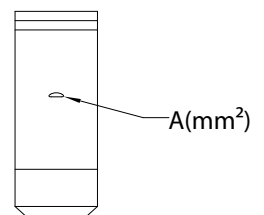
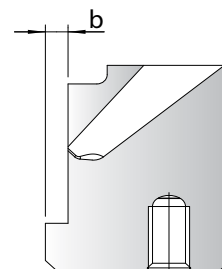
TPS-S

A [mm ²]	~ Ø [mm]	b2 [mm]
0.12	0.4	2.1
0.40	0.7	2.2
0.75	1.0	2.3
1.13	1.2	2.4



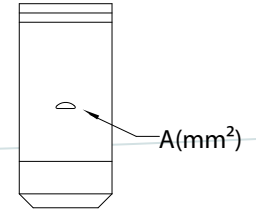
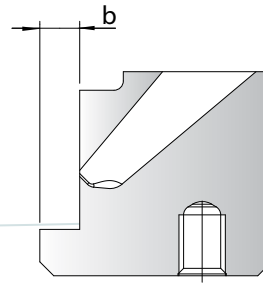
TPS-1

A [mm ²]	~ Ø [mm]	b2 [mm]
0.49	0.8	2.2
0.92	1.1	2.3
1.42	1.4	2.4
1.97	1.6	2.5
2.56	1.8	2.6



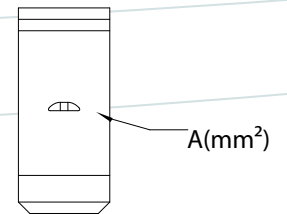
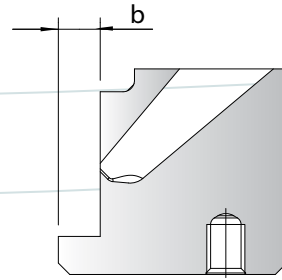
TPS-2

A [mm ²]	~ Ø [mm]	b2 [mm]
0.54	0.8	4.2
1.05	1.2	4.3
1.64	1.5	4.4
2.3	1.7	4.5
3.0	1.9	4.6
3.76	2.2	4.7
4.55	2.4	4.8
5.37	2.6	4.9
6.23	2.8	5.0



TPS-3

A [mm ²]	~ Ø [mm]	b2 [mm]
1.0	1.1	5.2
1.81	1.5	5.3
2.7	1.9	5.4
3.67	2.2	5.5
4.7	2.4	5.6
5.78	2.7	5.7
6.92	3.0	5.8
8.09	3.2	5.9
9.3	3.4	6.0
max. 15.8	4.5	6.5



Standardeinbau für flache und mittlere Konturtiefen

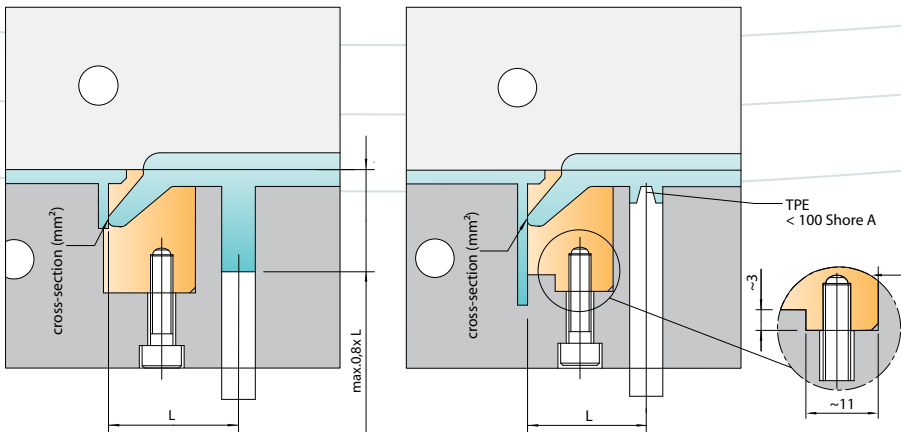
Standard installation for shallow and medium contour depths

montaggio standard per pareti di bassa e media profondità

Sondereinbau für große Konturtiefen

Special installation for deep contours

montaggio standard per pareti di alta profondità



DE Thermoplastische Elastomere (TPE)

- > Niedrige Shorehärte = geringeres Abstandsmaß L
- > Zentrierzapfen verwenden
- > Shorehärte max. 100 Shore A

EN Thermoplastic elastomers (TPE)

- > Low Shore hardness = shorter distance L
- > Use centring pin
- > Max. hardness 100 Shore A

IT Elastomeri termoplastici (TPE)

- > Bassa durezza Shore = distanza L più ridotta
- > Utilizzare un perno di guida
- > Durezza: max. 100 Shore A

Diagramm für Abstandsmaß L · Table for distance L · Diagramma per la distanza L

Materialart · Material type · Tipo di materiale

flexible Materialien
flexible materials · materiali flessibili

steife Materialien
rigid materials · materiali rigidi

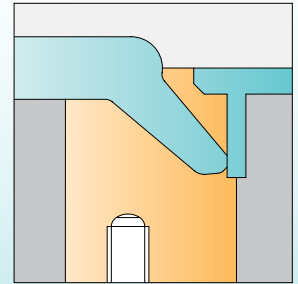
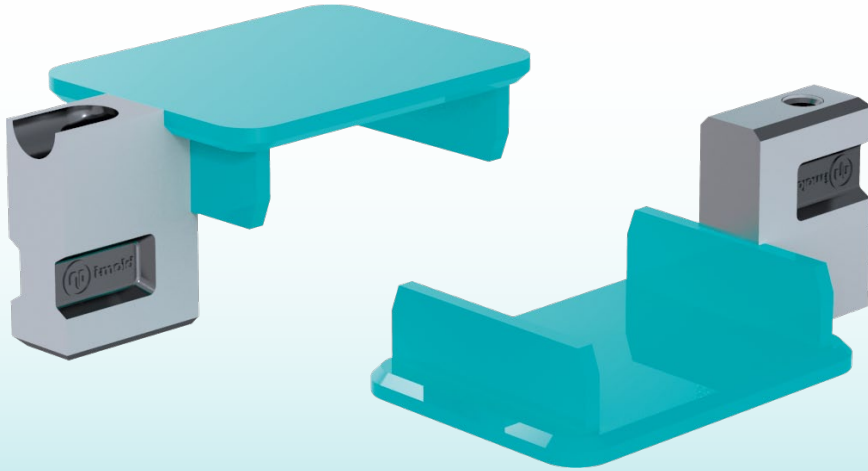
TPS-5	~ 18	~ 23
TPS-1	~ 22	~ 30
TPS-2	~ 28	~ 38
TPS-3	~ 33	~ 47

Einbaubeispiele

Examples of installation · Esempi di montaggio

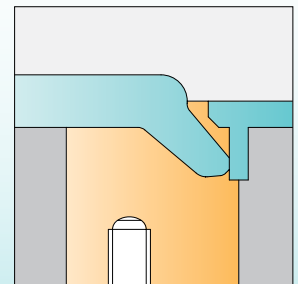
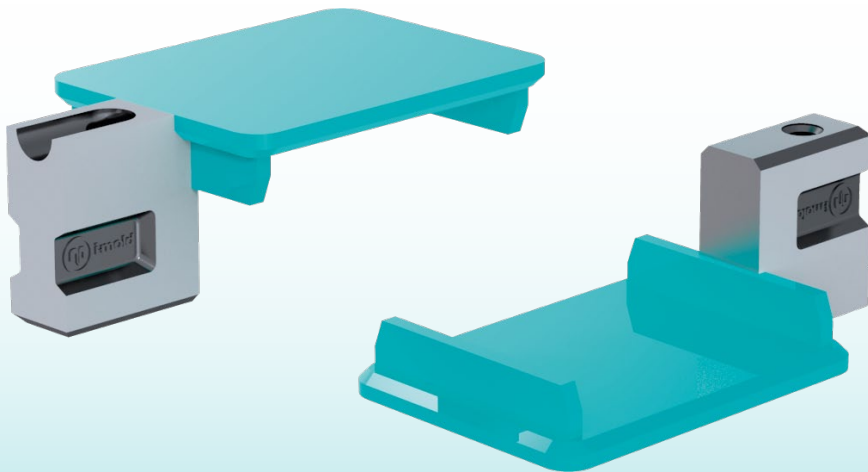
Seitliche Anspritzung – Standard Einbau

Side gating – standard installation
Iniezione laterale – montaggio standard



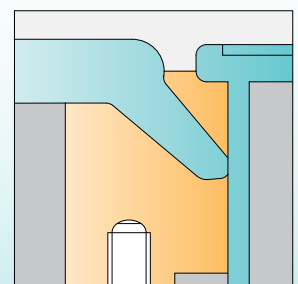
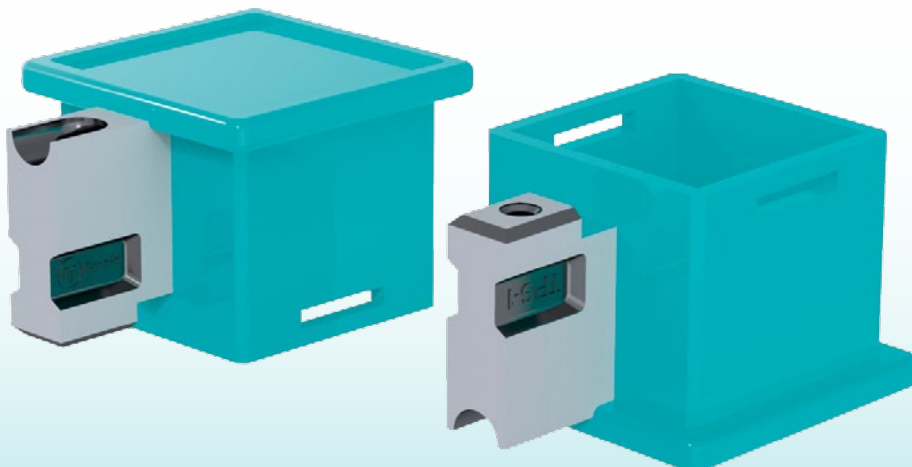
Seitliche Anspritzung – für flache Konturtiefen

Side gating – for flat contours
Iniezione per pareti laterali poco profonde



Seitliche Anspritzung – für große Konturtiefen

Side gating – for deep contours
iniezione per pareti laterali molto profonde





i-mold
MOLDING INNOVATIONS

i-mold GmbH & Co. KG
Relystraße 29 a
D-64720 Michelstadt

Tel.: +49 (0) 6061 96564-0
Fax: +49 (0) 6061 96564-33
info@i-mold.de

www.i-mold.de
www.i-mold.com

M O L D I N G I N N O V A T I O N S