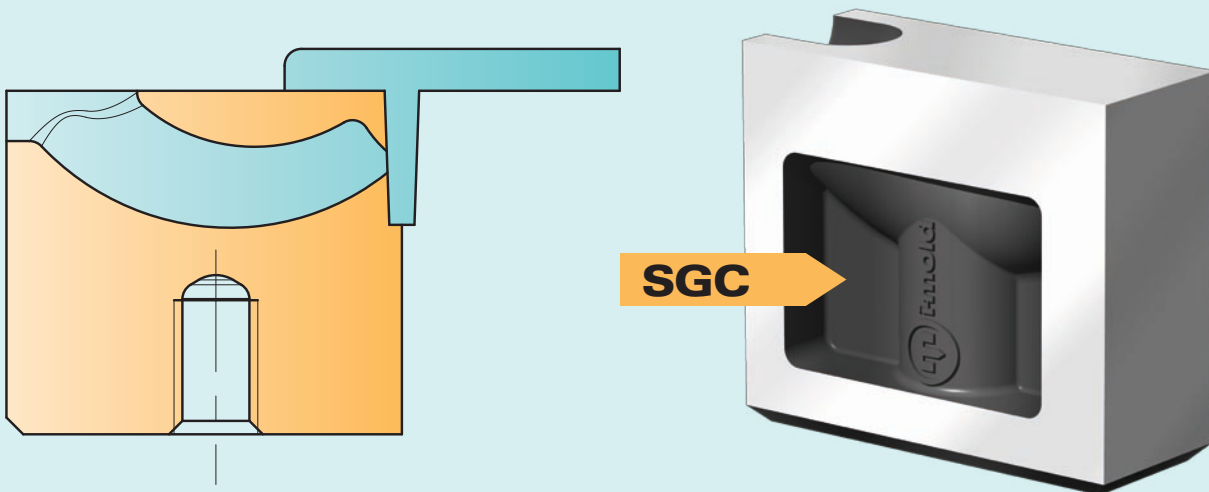


# SGC

seitliche Anspritzung  
side gating  
iniezione laterale

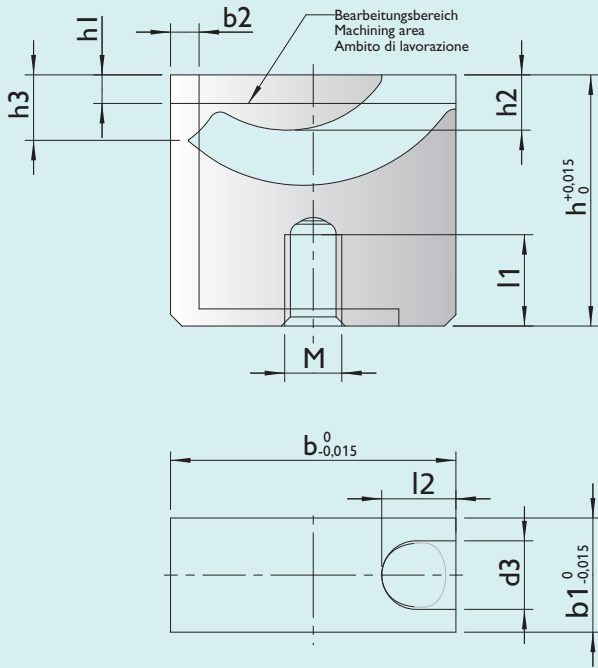


- DE**
  - gebogener Kanal ermöglicht die Anspritzung in Bereichen, die tief im Bauteil liegen
  - integrierter Stauboden reduziert Druckverlust und Scherung
  - hoch verschleißfester Warmarbeitsstahl M2 (1.3343) – 54+2 HRC
- EN**
  - curved tunnel permits gating deep inside the part
  - integrated dead-end recess reduces loss of pressure and shear stress.
  - highly wear-resistant hot working steel M2 (1.3343) – 54+2 HRC
- IT**
  - il canale curvato consente l’iniezione in zone profonde del componente
  - il fondo di ritenzione integrato riduce la perdita di pressione e l’attrito
  - acciaio per lavorazioni a caldo particolarmente resistente all’usura M2 (1.3343) – 54+2 HRC



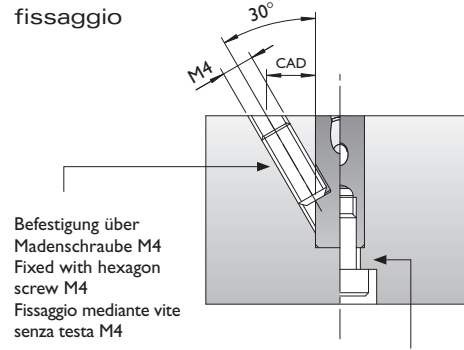
|  | SGC-XS    | SGC-S     | SGC-1     | SGC-2     | SGC-3         |
|--|-----------|-----------|-----------|-----------|---------------|
| Anschnitt / gate point / punto d’iniezione                                       | 0,4 - 0,8 | 0,4 - 1,0 | 0,6 - 1,4 | 0,8 - 2,1 | ~ Ø 1,1 - 3,3 |
| Ø Kanal / runner / canale  | 2.5       | 2.5       | 4         | 6         | 8             |
| <b>max. Schussgewichte (g) · max. shotweight (g) · pesi d’iniezione max. (g)</b> |           |           |           |           |               |
| <b>NV</b>  | 12        | 20        | 35        | 250       | 1000          |
| <b>MV</b>  | 7         | 12        | 25        | 120       | 500           |
| <b>HV</b>  | 5         | 8         | 15        | 90        | 300           |

NV = niedrige Viskosität / low viscosity / bassa viscosità  
 MV = mittlere Viskosität / medium viscosity / media viscosità  
 HV = hohe Viskosität / high viscosity / elevata viscosità



## SGC-XS / SGC-S

**Befestigungsmöglichkeiten**  
Mounting possibilities  
Possibilità di fissaggio



Befestigung über  
Madenschraube M4  
Fixed with hexagon  
screw M4  
Fissaggio mediante vite  
senza testa M4

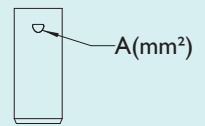
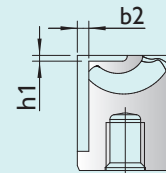
Befestigung über Zylinderschraube M4  
Fixed with headless screw M4  
Fissaggio mediante vite a testa cilindrica M4

| Typ    | b  | b1 | b2 max. | d3  | h  | h1 max. | h2  | h3  | l1 | l2  | M |
|--------|----|----|---------|-----|----|---------|-----|-----|----|-----|---|
| SGC-XS | 10 | 5  | 1.1     | 2.5 | 12 | 0.6     | 1.9 | 2.0 | 5  | 3.2 | 4 |
| SGC-S  | 15 | 6  | 2.0     | 2.5 | 18 | 2       | 3.5 | 4.0 | 8  | 4   | 4 |
| SGC-1  | 18 | 8  | 1.8     | 4   | 22 | 2       | 3.5 | 4.1 | 9  | 5.2 | 5 |
| SGC-2  | 25 | 10 | 2.5     | 6   | 22 | 2.5     | 4.8 | 5.7 | 8  | 6.5 | 5 |
| SGC-3  | 30 | 12 | 2.8     | 8   | 27 | 4.5     | 7.5 | 8.4 | 9  | 7   | 6 |

➔ Beispiel Bestellbezeichnung · Example of order specification · Esempio codice di ordinazione: **SGC-XS**

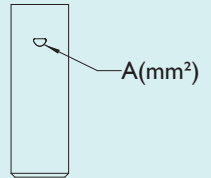
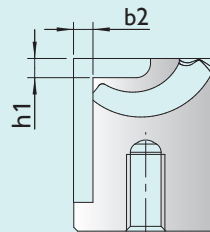
### SGC-XS

| A [mm <sup>2</sup> ] | ~ Ø [mm] | b2 [mm] |
|----------------------|----------|---------|
| 0.13                 | 0.4      | 0.9     |
| 0.3                  | 0.6      | 1.0     |
| 0.53                 | 0.8      | 1.1     |



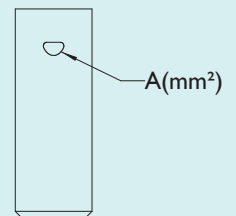
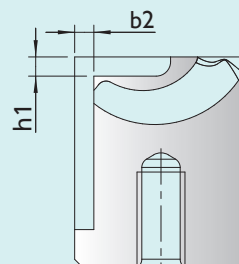
### SGC-S

| A [mm <sup>2</sup> ] | ~ Ø [mm] | b2 [mm] |
|----------------------|----------|---------|
| 0.15                 | 0.4      | 1.7     |
| 0.33                 | 0.6      | 1.8     |
| 0.55                 | 0.8      | 1.9     |
| 0.79                 | 1.0      | 2.0     |



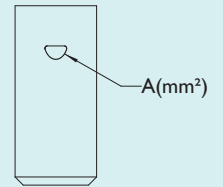
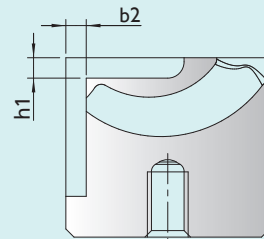
### SGC-1

| A [mm <sup>2</sup> ] | ~ Ø [mm] | b2 [mm] |
|----------------------|----------|---------|
| 0.28                 | 0.6      | 1.4     |
| 0.53                 | 0.8      | 1.5     |
| 0.82                 | 1        | 1.6     |
| 1.15                 | 1.2      | 1.7     |
| 1.52                 | 1.4      | 1.8     |



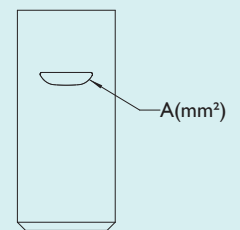
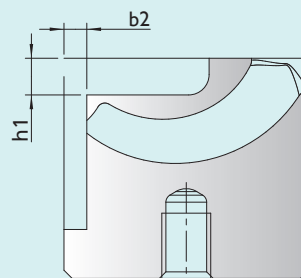
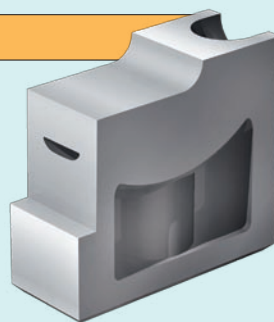
**SGC-2**

| A [mm <sup>2</sup> ] | ~ Ø [mm] | b2 [mm] |
|----------------------|----------|---------|
| 0.28                 | 0.6      | 1.7     |
| 0.54                 | 0.8      | 1.8     |
| 0.84                 | 1        | 1.9     |
| 1.2                  | 1.2      | 2       |
| 1.57                 | 1.4      | 2.1     |
| 2                    | 1.6      | 2.2     |
| 2.43                 | 1.75     | 2.3     |
| 2.9                  | 1.9      | 2.4     |
| 3,4                  | 2,1      | 2,5     |



**SGC-3**

| A [mm <sup>2</sup> ] | ~ Ø [mm] | b2 [mm] |
|----------------------|----------|---------|
| 1                    | 1.1      | 2       |
| 1.75                 | 1.5      | 2.1     |
| 2.56                 | 1.8      | 2.2     |
| 3.43                 | 2.1      | 2.3     |
| 4.35                 | 2.35     | 2.4     |
| 5.32                 | 2.6      | 2.5     |
| 6.33                 | 2.85     | 2.6     |
| 7.38                 | 3        | 2.7     |
| 8.48                 | 3.3      | 2.8     |



**Standardeinbau für flache und mittlere Konturtiefen**

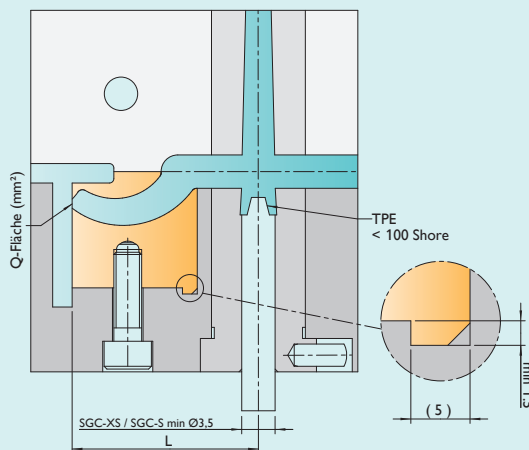
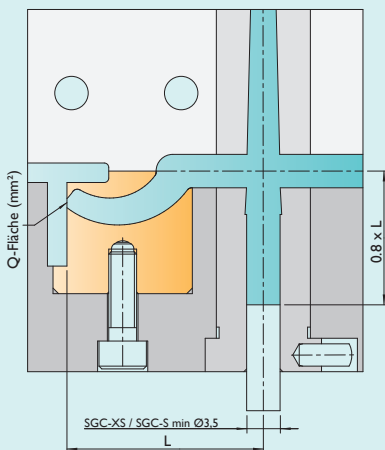
Standard installation for shallow and medium contour depths

Montaggio standard per medie ed elevate profondità di contornatura

**Sondereinbau für große Konturtiefen**

Special installation for deep contours

Montaggio speciale per grandi profondità di contornatura



- DE Thermoplastische Elastomere (TPE)**
  - Kleine Shorehärte = geringeres Abstandsmaß L
  - Zentrierzapfen verwenden
  - Shorehärte max. 100 Shore A
- EN Thermoplastic elastomers (TPE)**
  - Low Shore hardness = shorter distance L
  - Use centring pin
  - Max. hardness 100 Shore A
- IT Elastomeri termoplastici (TPE)**
  - Bassa durezza Shore = distanza L più ridotta
  - Utilizzare un perno di guida
  - Durezza: max. 100 Shore A

**Diagramm für Abstandsmaß L · Table for distance L · Diagramma per la distanza L**

| Materialart · Material type · Tipo di materiale |               |                  |                             |                           |
|---|---------------|------------------|-----------------------------|---------------------------|
|   | TPE, TPU etc. | PE, PP, PET etc. | PC/ABS, PA, POM, HI-PC etc. | PA+GF, PC, SAN, PMMA etc. |
| <b>SGC-XS</b>                                   | 12-16         | 13-20            | 16-23                       | 22-29                     |
| <b>SGC--S</b>                                   | 16-21         | 18-25            | 21-28                       | 27-34                     |
| <b>SGC--I</b>                                   | 21-26         | 26-34            | 31-39                       | 36-45                     |
| <b>SGC--2</b>                                   | 28-33         | 31-39            | 36-44                       | 41-50                     |
| <b>SGC--3</b>                                   | 33-38         | 38-48            | 43-53                       | 48-58                     |