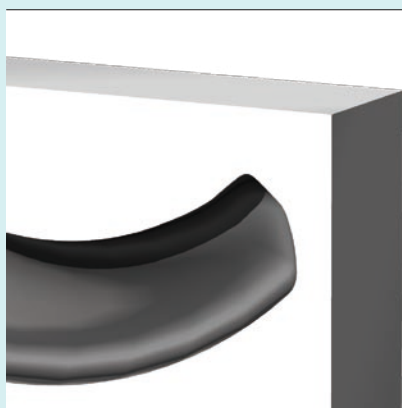
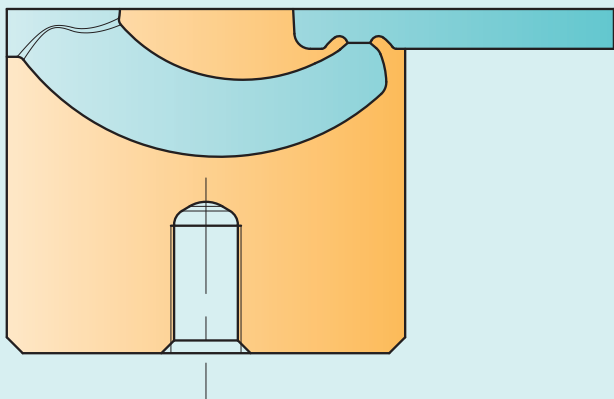


TGC

konturierbar
contourable
contornabile



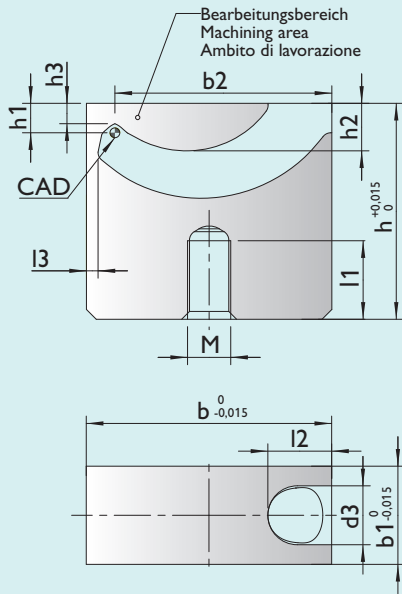
- DE** ■ für Konturierungen bis zu 10mm
■ individuell anpassbar
■ in 2 Härteklassen (60 HRC / 40 HRC) erhältlich
- EN** ■ for contouring up to 10mm
■ individually adjustable
■ available in 2 degrees of hardness (60 HRC / 40 HRC)
- IT** ■ per contornature fino a 10mm
■ adattamento individuale
■ disponibile in 2 differenti durezza (60 HRC / 40 HRC)



	TGC-XS	TGC-S	TGC-1	TGC-2	TGC-3	TGC-4
max. Konturtiefe / max. contour depth / max. profondità di contornatura	1	2	2	3	5	10
∅ Ansnitt / gate point / punto d'iniezione	0,4 - 0,6	0,4 - 0,8	0,6 - 1,2	0,8 - 1,8	0,5x4,5 - 1,5x5,5	0,5x4,5 - 1,5x5,5
∅ Kanal / runner / canale	2,5	2,5	4	6	8	8

	max. Schussgewichte (g) · max. shotweight (g) · pesi d'iniezione max. (g)					
NV	5	12	35	120	1000	1000
MV	4	7	25	75	500	500
HV	3	5	15	50	300	300

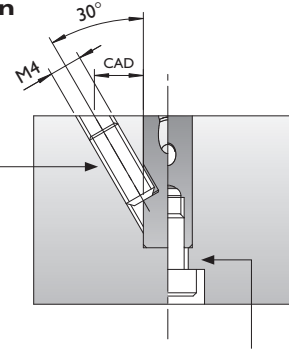
NV = niedrige Viskosität / low viscosity / bassa viscosità
 MV = mittlere Viskosität / medium viscosity / media viscosità
 HV = hohe Viskosität / high viscosity / elevata viscosità



TGC-XS / TGC-S

Befestigungsmöglichkeiten Mounting possibilities Possibilità di fissaggio

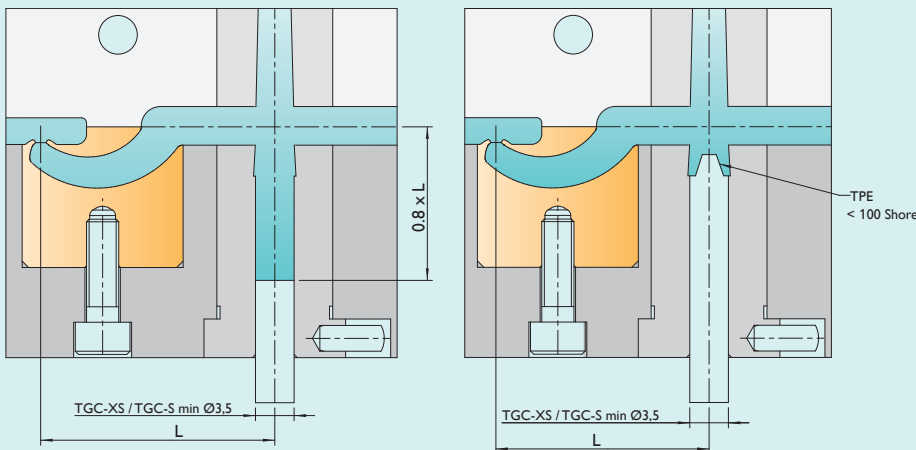
Befestigung über Madenschraube M4
Fixed with hexagon screw M4
Fissaggio mediante vite senza testa M4



Befestigung über Zylinderschraube M4
Fixed with headless screw M4
Fissaggio mediante vite a testa cilindrica M4

Typ	b	b1	b2	d3	h	h1	h2	h3	I1	I2	I3	M	HRC
TGC-XS	10	5	8.5	2.5	12	1	1.9	0.6	5	3.2	0.7	4	Version U = 40 HRC Version H = 60 HRC
TGC-S	15	6	13.3	2.5	18	2	3.5	1.5	8	4	0.9	4	
TGC-1	18	8	16	4	22	2	3.5	1.3	9	5.2	0.9	5	
TGC-2	25	10	22.1	6	22	3	4.8	2.1	8	6.5	1.2	5	
TGC-3	30	12	26.9	8	27	5	7.5	4.1	9	7	1.2	6	
TGC-4	45	12	41.2	8	36	10	16.7	9.1	8	9.6	1.8	6	

➔ Beispiel Bestellbezeichnung · Example of order specification · Esempio codice di ordinazione: **TGC-XS-U**



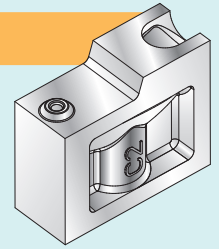
- DE Thermoplastische Elastomere (TPE)**
 - Kleine Shorehärte = geringeres Abstandsmaß L
 - Zentrierzapfen verwenden
 - Shorehärte max. 100 Shore A
- EN Thermoplastic elastomers (TPE)**
 - Low Shore hardness = shorter distance L
 - Use centring pin
 - Max. hardness 100 Shore A
- IT Elastomeri termoplastici (TPE)**
 - Bassa durezza Shore = distanza L più ridotta
 - Utilizzare un perno di guida
 - Durezza: max. 100 Shore A

Diagramm für Abstandsmaß L · Table for distance L · Diagramma per la distanza L

	Materialart · Material type · Tipo di materiale			
	TPE, TPU etc.	PE, PP, PET etc.	PC/ABS, PA, POM, HI-PC etc.	PA+GF, PC, SAN, PMMA etc.
TGC-XS	12-16	13-20	16-23	22-29
TGC-S	16-21	18-25	21-28	27-34
TGC-1	21-26	26-34	31-39	36-45
TGC-2	28-33	31-39	36-44	41-50
TGC-3	33-38	38-48	43-53	48-58
TGC-4	48-53	53-63	58-68	?

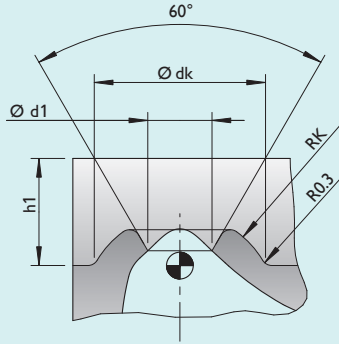
Kalotten · Vestiges · Calotta

TGC-XS / -S / -1 / -2



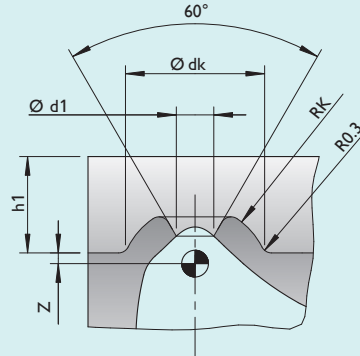
Standard Kalotte

Standard vestige · Calotta standard



Kleine Kalotte

Small vestige · Calotta piccola



	Kalotte	h1	d1max.	dk	Rk	Z
TGC-XS	Standard	1.0	0.6	2.5	1.6	-
TGC-S	Standard	2.0	0.8	2.7	1.7	-
TGC-1	Klein / Small / Piccolo	1.8	0.7	2.6	1.4	0.2
	Standard	2.0	1.2	3.2	1.8	-
TGC-2	Klein / Small / Piccolo	2.75	1.2	3.5	2.0	0.25
	Standard	3.0	1.8	4.5	2.6	-



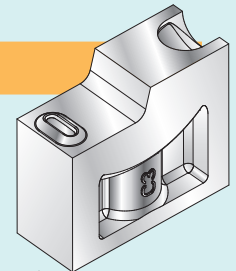
Abstand Z zum CAD-Nullpunkt beachten!

Maintain offset Z from CAD reference point!

Rispettare la distanza Z fino al punto zero CAD!

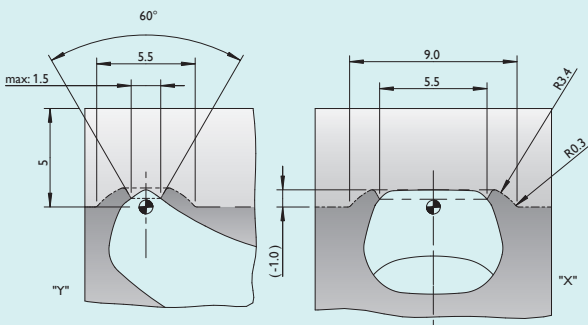
Kalotten · Vestiges · Calotta

TGC-3 / -4



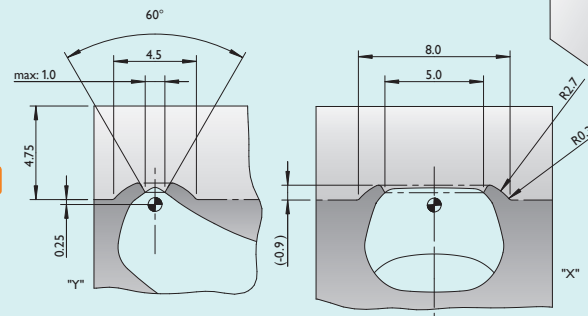
Standard Kalotte

Standard vestige · Calotta standard

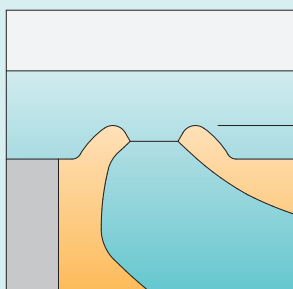


Kleine Kalotte

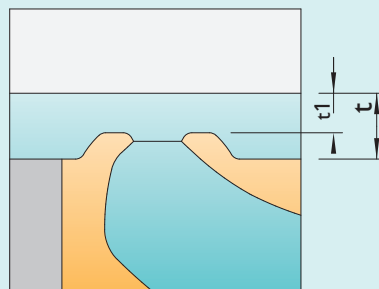
Small vestige · Calotta piccola



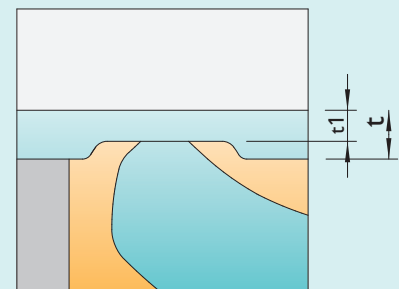
Kalotten Varianten · Vestige versions · Versioni di calotte



Kugelförmige Kalotte mit Kegel
Spherical vestige with cone
Calotta sferica con cono



Abgeflachte Kalotte mit Kegel
Flattened vestige with cone
Calotta piatta con cono



Abgeflachte Kalotte ohne Kegel
Flattened vestige without cone
Calotta piatta senza cono

t1 > t/2 t = Wandstärke des Kunststoffteils / t = wall thickness of plastic part / t = spessore parete del pezzo in plastica